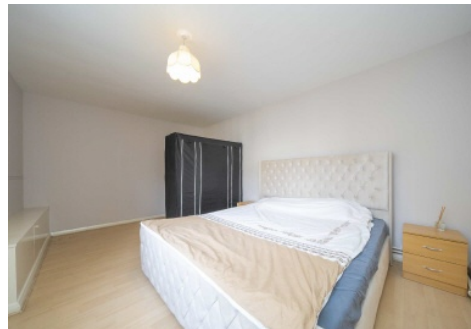


# Frank Harris & Co.



## Birkenhead Street, WC1H

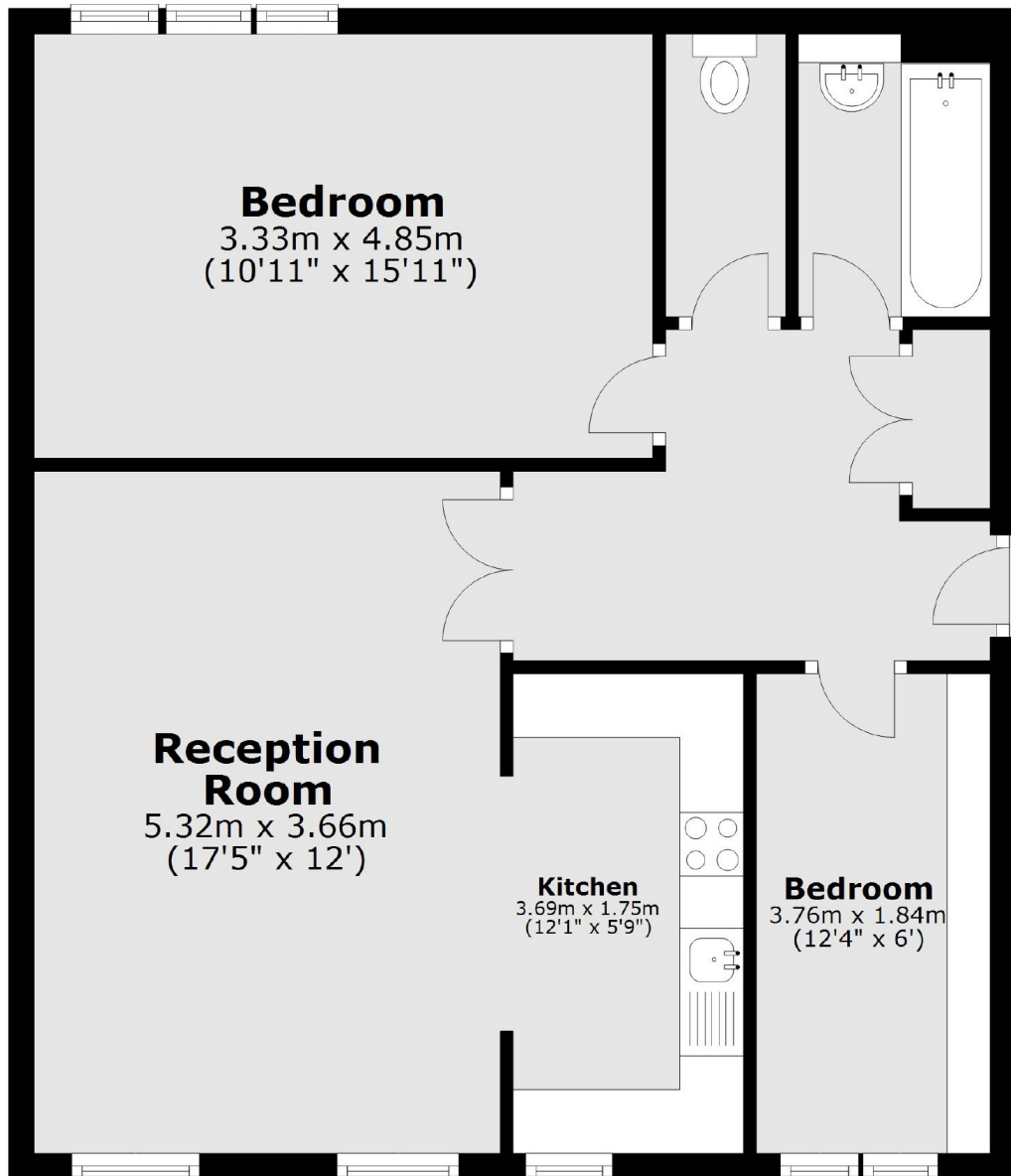
£576 Per week

A well-presented and spacious 1.5 bedroom flat in an excellent location. Set within the church property, the property offers security but is its own self-contained space. Large, bright living room open plan kitchen, bedroom facing the rear, and office/second bedroom. Separate bathroom and W.C.

The property is located just under 150 yards from King's Cross Station and also to Argyle Gardens. There is a large selection of coffee shops, eateries and a peaceful garden square within the vicinity.

- One Double-Bedroom • One Single-Bedroom/Office • Open-plan Kitchen •
- Wooden Floors Throughout • Central Location • Secure Building •

# Frank Harris & Co.



Total area: approx. 65.8 sq. metres (708.8 sq. feet)

Frank Harris & Co. Bloomsbury and Kings Cross  
81 Marchmont Street, London,  
WC1N 1AL  
020 7387 0077  
bloomsburylettings@frankharris.co.uk

Energy Rating: E. We aim to make our particulars both accurate and reliable. However they are not guaranteed; nor do they form part of an offer or contract. If you require clarification on any points then please contact us, especially if you're traveling some distance to view. Please note that appliances and heating systems have not been tested and therefore no warranties can be given as to their good working order.

