

Frank Harris & Co.



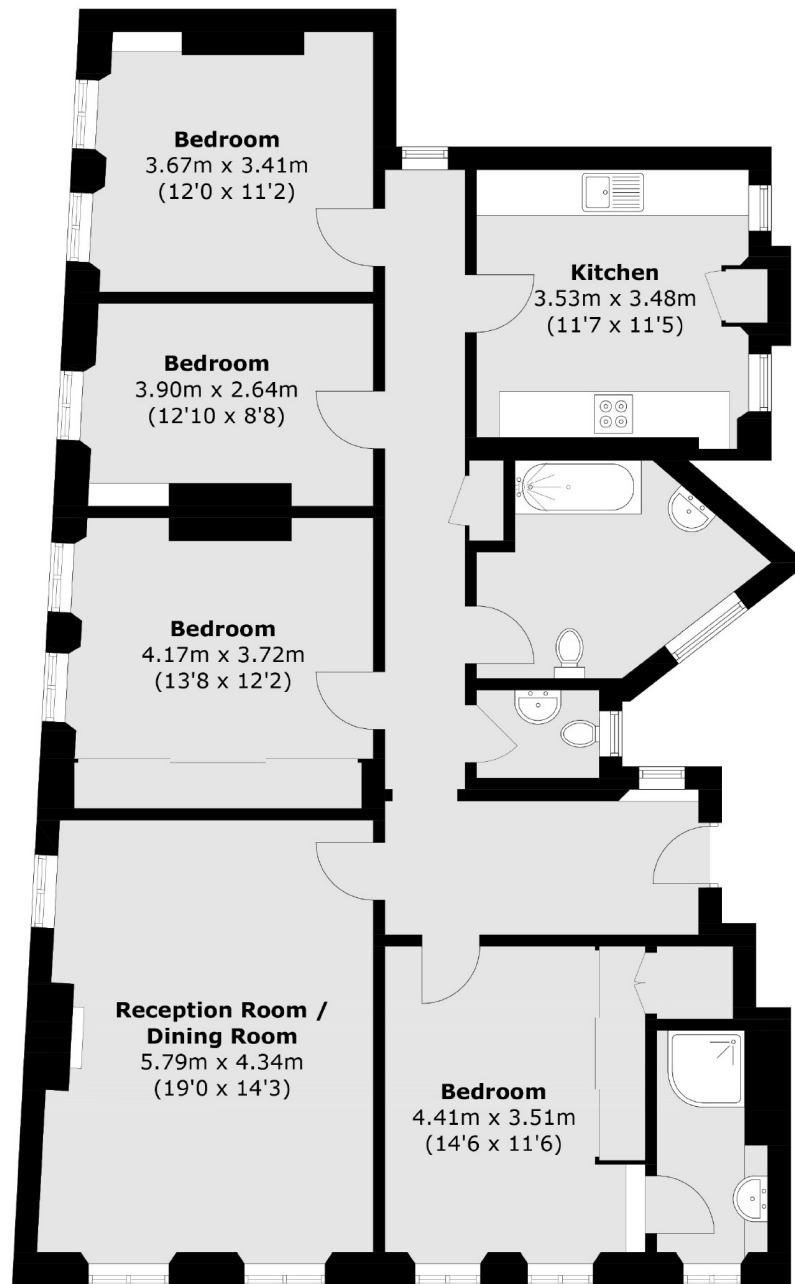
Edgware Road, NW1

£1,500,000

This four-bedroom home is located in Hyde Park, featuring spacious, well-proportioned rooms with high ceilings. It is in excellent condition and has a classic design that fits the neighbourhood's historic charm.

A Prime residential location in the heart of London. This exquisite community offers the perfect blend of urban living and tranquillity, with Hyde Park just steps away. Enjoy easy access to high-end shopping on Oxford Street, a diverse culinary scene, and top-notch educational institutions. Excellent healthcare facilities and seamless public transportation make life convenient. The modern and elegant living spaces cater to your needs, and a rich cultural scene is right at your doorstep.

Frank Harris & Co.



Total area (approx.): 128.8 sq. m (1386.4 sq. ft)

Frank Harris & Co. Bloomsbury and Kings Cross
81 Marchmont Street,
London, WC1N 1AL
020 7405 4444
bloomsburysales@frankharris.co.uk

Energy Rating: E. We aim to make our particulars both accurate and reliable. However they are not guaranteed; nor do they form part of an offer or contract. If you require clarification on any points then please contact us, especially if you're traveling some distance to view. Please note that appliances and heating systems have not been tested and therefore no warranties can be given as to their good working order.

