

Frank Harris & Co.



Mecklenburgh Square, WC1N

£1,200 pcm

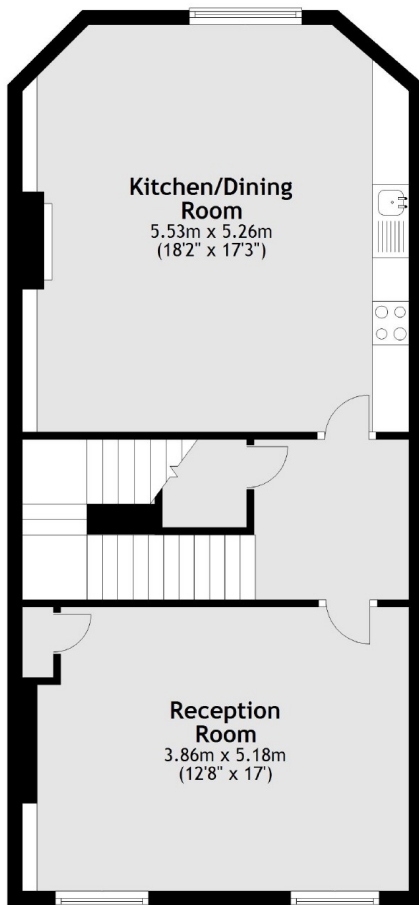
A beautifully presented three bedroom maisonette located on the prestigious Mecklenburgh Square. With views onto the private gardens. The property is set over the top two floors and is offered furnished or unfurnished.

The prestigious Mecklenburgh Square is located just 0.5 miles from King's Cross Station and Russell Square Station. Lambs Conduit Street is close by for access to local, independent shops, restaurants and cafes.

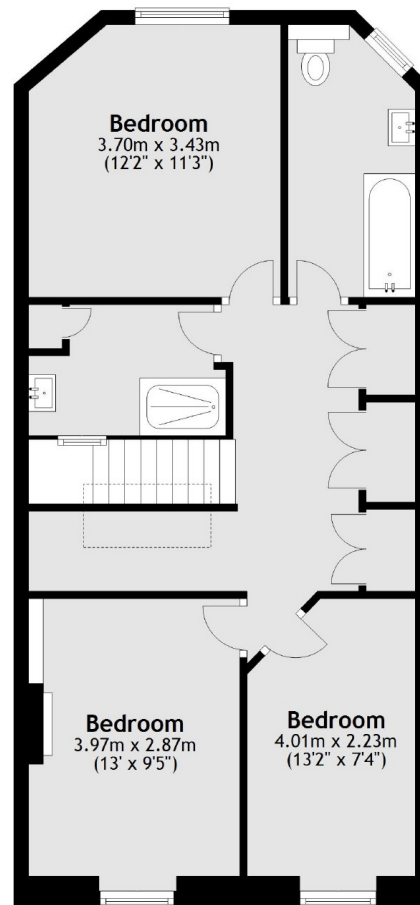
- Three Double Bedrooms • Two Reception Rooms • Top Floor Maisonette •
- Original Wood Floors • Modern Kitchen/Bathroom • Access To Gardens •

Frank Harris & Co.

Second Floor



Third Floor



Total area: approx. 122.0 sq. metres (1313.7 sq. feet)

Frank Harris & Co. Bloomsbury and Kings Cross
81 Marchmont Street,
London, WC1N 1AL
020 7387 0077
bloomsburylettings@frankharris.co.uk

Energy Rating: C. We aim to make our particulars both accurate and reliable. However they are not guaranteed; nor do they form part of an offer or contract. If you require clarification on any points then please contact us, especially if you're traveling some distance to view. Please note that appliances and heating systems have not been tested and therefore no warranties can be given as to their good working order.

