

Frank Harris & Co.



Gray's Inn Road, WC1X

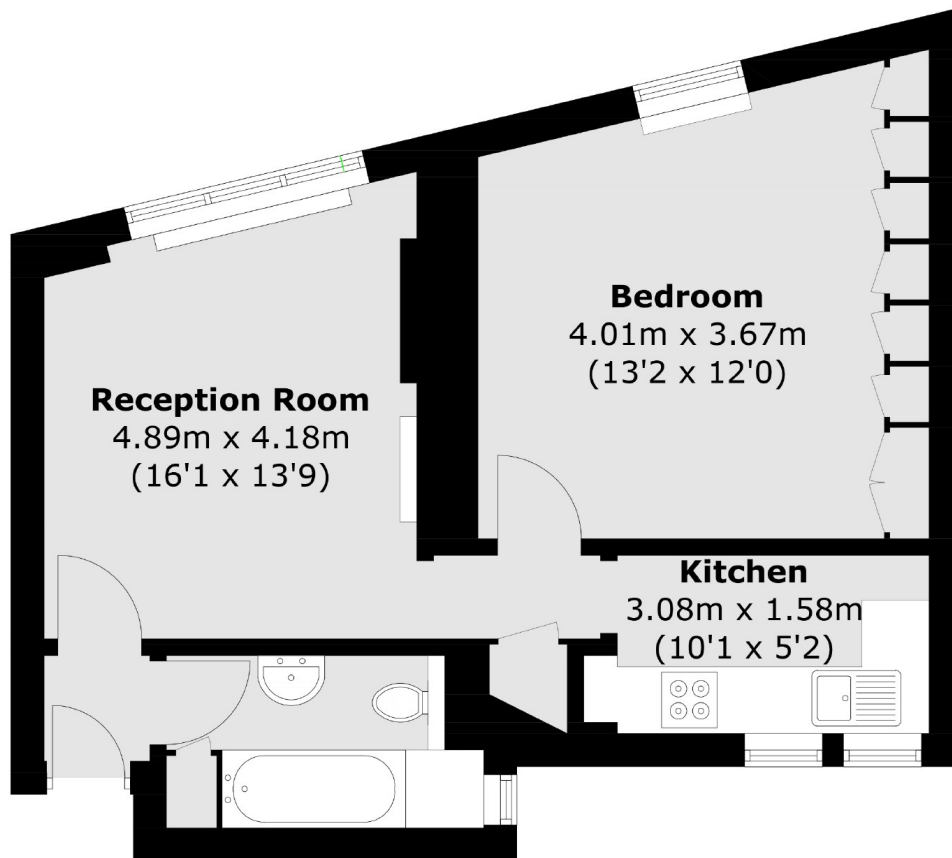
£530 Per week

Presented to the market is a beautifully presented one-bedroom apartment on Gray's Inn Road. The space is cosy and bright, with wall-to-wall storage in the double bedroom and a modern and well-equipped kitchen.

Gray's Inn Road is within walking distance of the local amenities and restaurants of both Bloomsbury and Kings Cross, as well as being perfectly situated for the local universities (UCL, SOAS, Central St Martins and LSE) and local, national and international transport links of Kings Cross station, St Pancras International and Euston.

- One-Bedroom • Second Floor • Modern and Cosy •
- Ample Storage • Close to Transport Links • Centrally Located •

Frank Harris & Co.



Second Floor

Total area (approx.): 44.1 sq. m (474.7 sq. ft)

Frank Harris & Co. Bloomsbury and Kings Cross
81 Marchmont Street, London,
WC1N 1AL
020 7387 0077
bloomsburylettings@frankharris.co.uk

Energy Rating: C. We aim to make our particulars both accurate and reliable. However they are not guaranteed; nor do they form part of an offer or contract. If you require clarification on any points then please contact us, especially if you're traveling some distance to view. Please note that appliances and heating systems have not been tested and therefore no warranties can be given as to their good working order.

