

# Frank Harris & Co.



**London, WC1H**

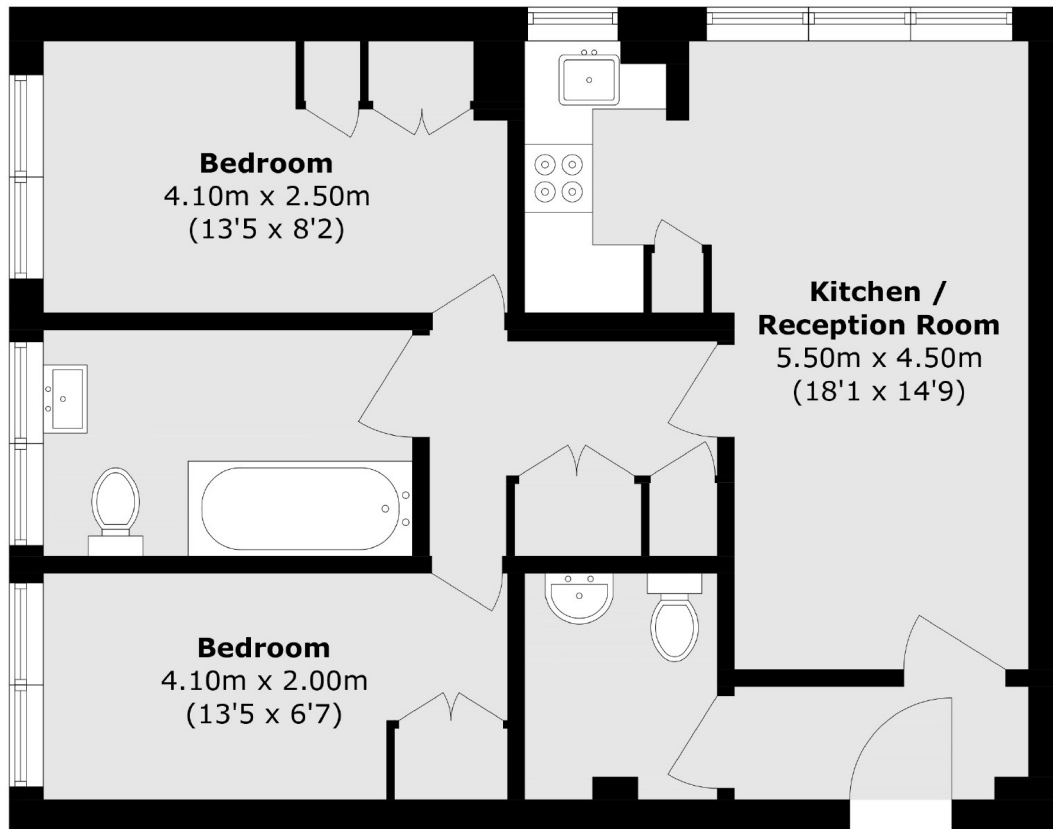
**£625 pcm**

This ground-floor property features two double bedrooms and an open-plan kitchen/living area. It offers spacious bedrooms, modern conveniences, a family bathroom, an additional WC, and the security of a well-maintained building.

Situated in the heart of Bloomsbury, this property provides easy access to a superb selection of shops, cafés, and restaurants. Euston, King's Cross, St Pancras International, and Russell Square stations are all just a short walk away.

- Two Bed • Additional WC • Portered Building •
- Good Storage • Ground Floor • Available Immediately •

# Frank Harris & Co.



Total area (approx.): 58.2 sq. m (626.4 sq. ft)

Frank Harris & Co. Bloomsbury and Kings Cross  
81 Marchmont Street,  
London, WC1N 1AL  
020 7387 0077  
[bloomsburylettings@frankharris.co.uk](mailto:bloomsburylettings@frankharris.co.uk)

Energy Rating: . We aim to make our particulars both accurate and reliable. However they are not guaranteed; nor do they form part of an offer or contract. If you require clarification on any points then please contact us, especially if you're traveling some distance to view. Please note that appliances and heating systems have not been tested and therefore no warranties can be given as to their good working order.

