

Frank Harris & Co.



Bloomsbury, WC1H

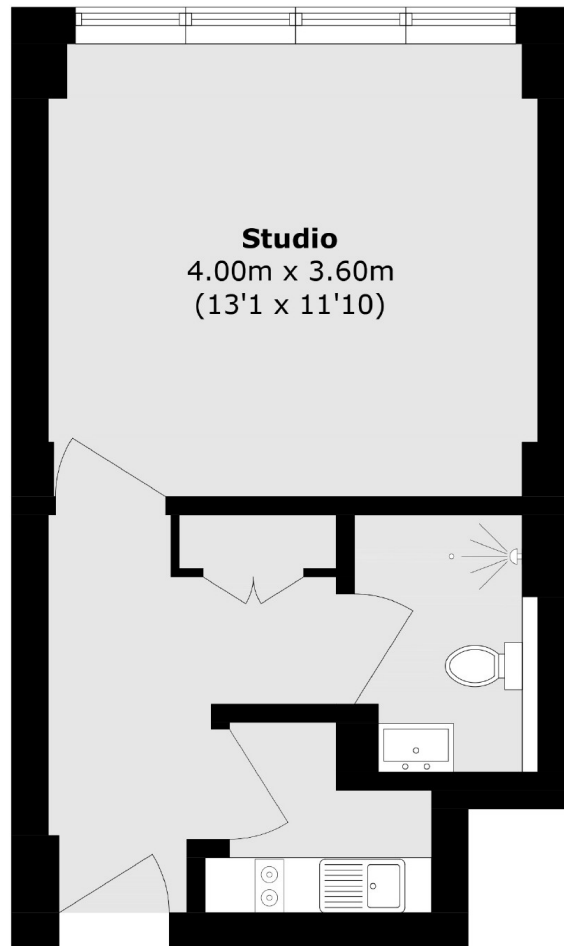
£325,000

OIEO Set on the seventh floor and enjoying great angled views of Russell Square, this bright, westerly facing, secondary-glazed studio flat is ideal for those seeking a central London home or pied-à-terre. The development benefits from the heating and hot water being included in the service charge, concierge and lift access.

Woburn Place sits in the heart of Bloomsbury, just moments from the Brunswick Centre and the world-famous British Museum, with Covent Garden's shops, theatres, and restaurants within easy reach. Russell Square and King's Cross stations provide excellent transport links across London.

- 24 Hour Concierge • No Onward Chain • Share Of The Freehold •
- Lift Access • Modern Condition • 7th Floor •

Frank Harris & Co.



Total area (approx.): 27.3 sq. m (293.8 sq. ft)

Frank Harris & Co. Bloomsbury and Kings Cross
81 Marchmont Street,
London, WC1N 1AL
020 7405 4444
bloomsburysales@frankharris.co.uk

Energy Rating: C. We aim to make our particulars both accurate and reliable. However they are not guaranteed; nor do they form part of an offer or contract. If you require clarification on any points then please contact us, especially if you're traveling some distance to view. Please note that appliances and heating systems have not been tested and therefore no warranties can be given as to their good working order.

