

# Frank Harris & Co.



## Bloomsbury, WC1X

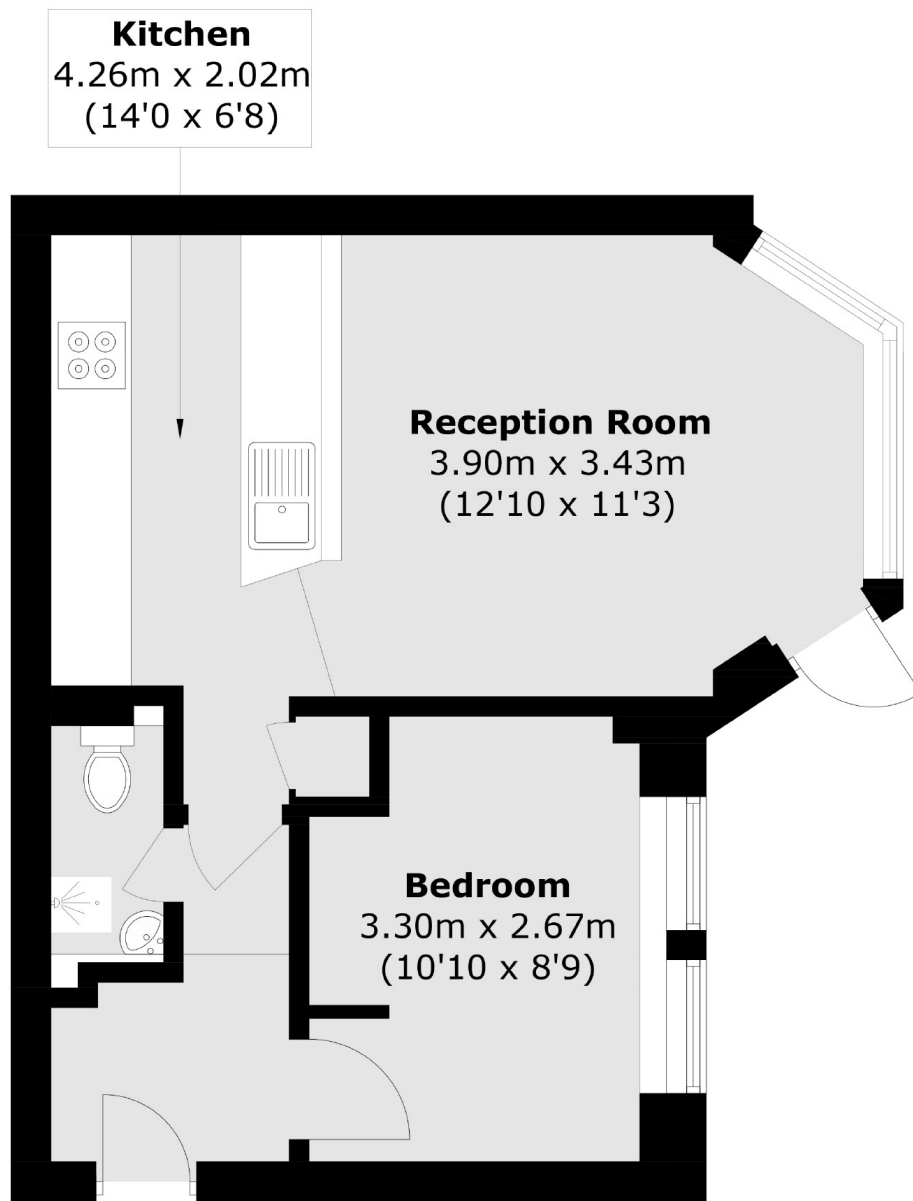
£519 Per week

A newly decorated, one double bedroom garden flat on the ground floor of this Art Deco building. The bright apartment features a spacious open plan kitchen/reception room and benefits further from a private rear garden, wooden floors and a daytime porter.

Trinity Court is located on Gray's Inn Road with convenient access to numerous transport links including Kings Cross St Pancras International mainline station. Due to its central position it is also within walking distance of the West End and the City.

- One Double Bedroom Apartment • Large Private Garden • Art-Deco Block •
- Ground Floor • Excellent Transport Links • Recently Refurbished •

# Frank Harris & Co.



Total area (approx.): 36.1 sq. m (388.6 sq. ft)

Frank Harris & Co. Bloomsbury and Kings Cross  
81 Marchmont Street, London,  
WC1N 1AL  
020 7387 0077  
[bloomsburylettings@frankharris.co.uk](mailto:bloomsburylettings@frankharris.co.uk)

Energy Rating: E. We aim to make our particulars both accurate and reliable. However they are not guaranteed; nor do they form part of an offer or contract. If you require clarification on any points then please contact us, especially if you're traveling some distance to view. Please note that appliances and heating systems have not been tested and therefore no warranties can be given as to their good working order.

