

Frank Harris & Co.



Cludesley Mansions, N1

£515,000

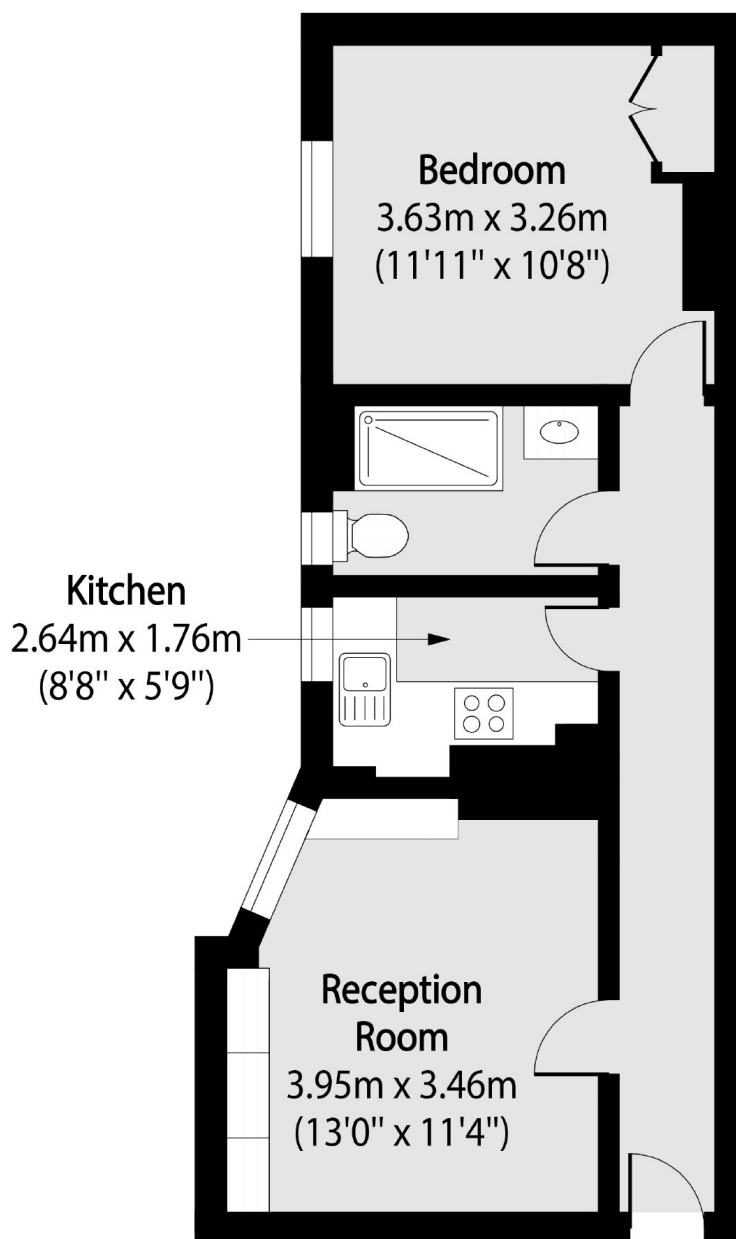
Situated in a charming Edwardian mansion block, this bright and airy one-bedroom flat offers classic period character and modern comfort. The property features high ceilings, a spacious living area, and a separate kitchen, all set within a peaceful residential tree-lined street in the heart of Islington.

Cludesley Place is a quiet, tree-lined street in the heart of Barnsbury, one of Islington's most desirable residential areas. Moments from the vibrant shops, cafés, and restaurants of Upper Street, the area also offers excellent transport links with both Angel (Northern Line) and King's Cross/St Pancras stations being nearby.

- Mansion Block • One Bedroom • No Onward Chain •

Frank Harris

— & Co. —



Total area (approx): 42.60 sq m (459 sq. ft)

Frank Harris & Co. Bloomsbury and Kings Cross
81 Marchmont Street,
London, WC1N 1AL
020 7405 4444
bloomsburysales@frankharris.co.uk

Energy Rating: . We aim to make our particulars both accurate and reliable. However they are not guaranteed; nor do they form part of an offer or contract. If you require clarification on any points then please contact us, especially if you're traveling some distance to view. Please note that appliances and heating systems have not been tested and therefore no warranties can be given as to their good working order.

