

Frank Harris

— & Co. —



Tavistock Place, WC1H

£1,500,000

Offered to the market with no onward chain, this penthouse apartment comprises a large lounge with patio doors leading to the private balcony, a separate eat-in kitchen, utility room, a large main bedroom with an en suite bathroom, two further double bedrooms, and a bathroom.

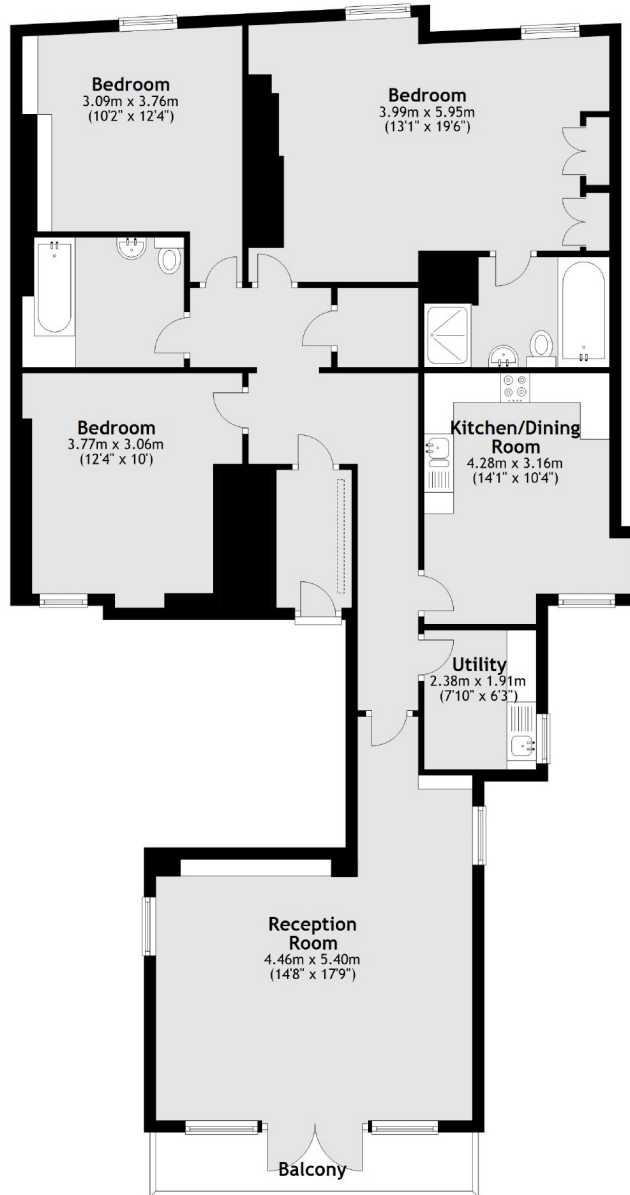


The Brunswick centre which houses Waitrose, various eateries, shops, and a cinema is a couple of minute's walk away and Kings Cross St Pancras and Russell Square Stations are less than a 5 minutes walk away.

- Penthouse Apartment • 1,373 Square Feet • Private Balcony •
- Chain Free • Three Double Bedroom • Lift Access •



Frank Harris & Co.



Total area: approx. 133.7 sq. metres (1439.2 sq. feet)

Frank Harris & Co. Bloomsbury and Kings Cross

81 Marchmont Street,

London, WC1N 1AL

020 7405 4444

bloomsburysales@frankharris.co.uk

Energy Rating: D. We aim to make our particulars both accurate and reliable. However they are not guaranteed; nor do they form part of an offer or contract. If you require clarification on any points then please contact us, especially if you're traveling some distance to view. Please note that appliances and heating systems have not been tested and therefore no warranties can be given as to their good working order.