

Frank Harris & Co.



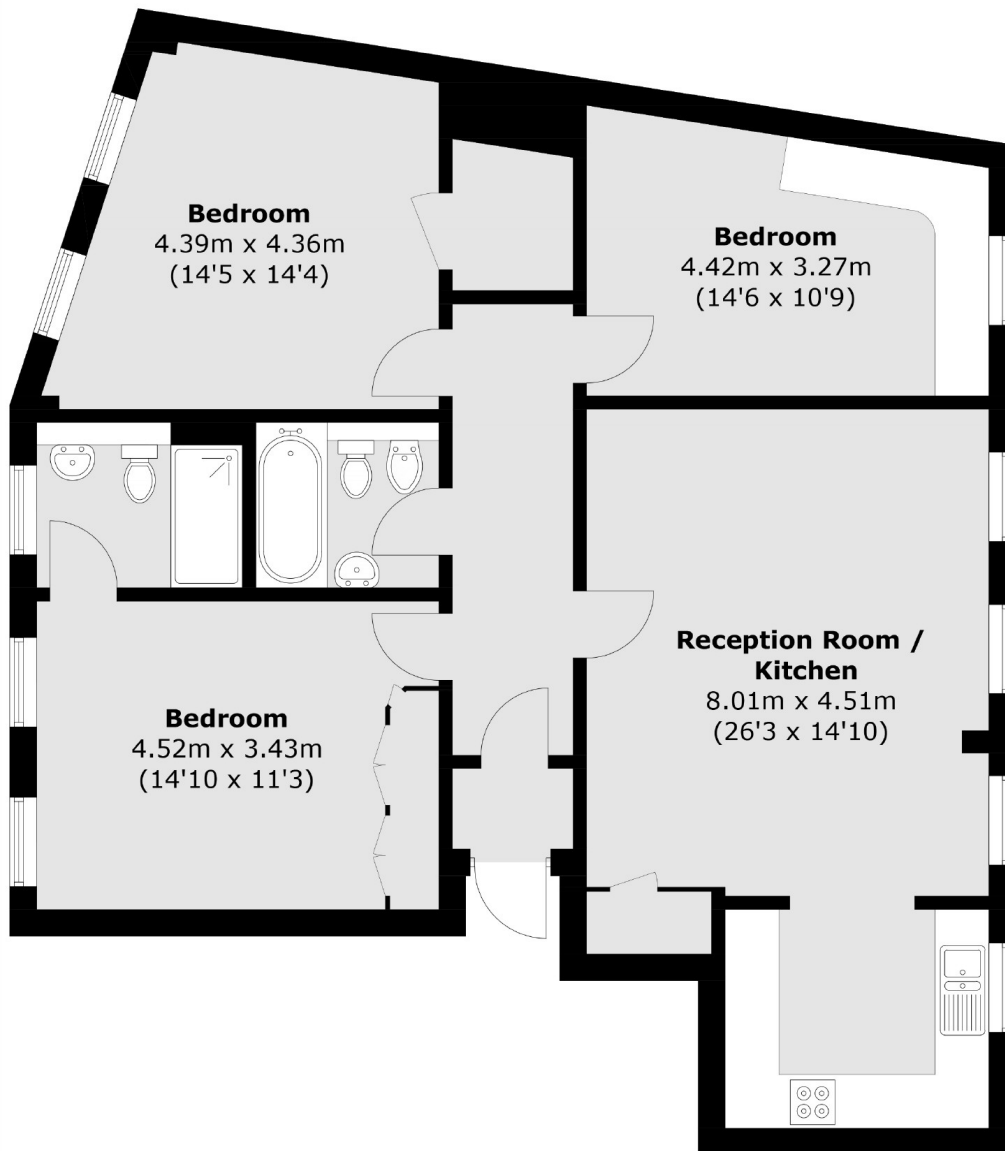
Great James Street, WC1N

£1,500,000

Situated in one of Bloomsbury's most iconic and beautiful streets this three bedroom apartment measures over 1000 square feet and is located on the third floor of this delightful period building with passenger lift. The property benefits from owning a share of freehold in this building of just 16 apartments with a lease length of more than 990 years remaining.

The property runs parallel to pedestrianised Lambs Conduit Street which offers a superb selection of independently owned eateries and cafes. Russell Square and Holborn are the nearest underground stations offering the Piccadilly and Central Lines, while Kings Cross St Pancras is also a short walk away where a host of other tube lines can be accessed as well as national and international travel links.

Frank Harris & Co.



Total area (approx.): 101.3 sq. m (1,090.4 sq. ft)

Frank Harris & Co. Bloomsbury and Kings Cross
81 Marchmont Street,
London, WC1N 1AL
020 7405 4444
bloomsburysales@frankharris.co.uk

Energy Rating: D. We aim to make our particulars both accurate and reliable. However they are not guaranteed; nor do they form part of an offer or contract. If you require clarification on any points then please contact us, especially if you're traveling some distance to view. Please note that appliances and heating systems have not been tested and therefore no warranties can be given as to their good working order.

