

Frank Harris & Co.



Thanet Street, WC1H

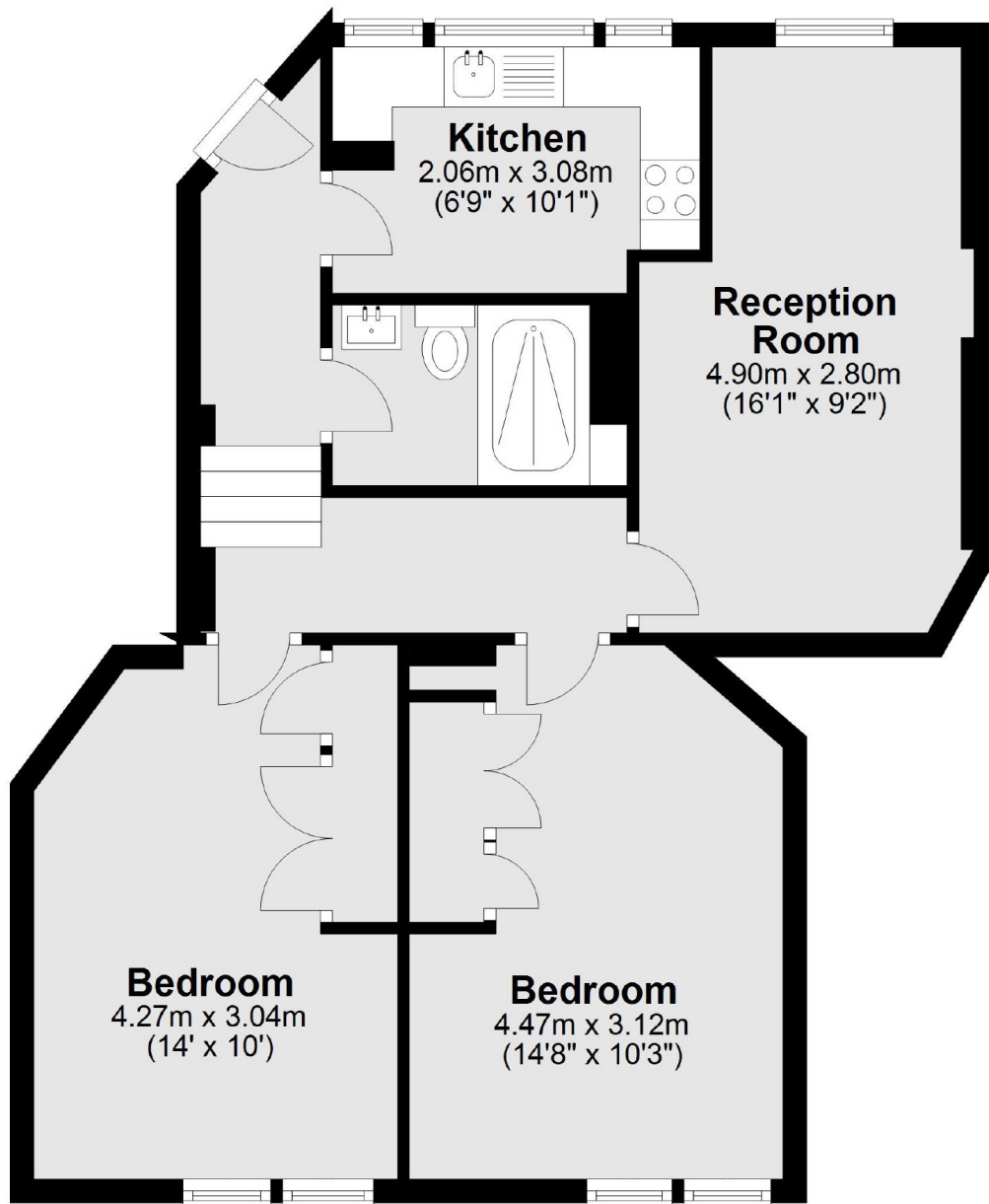
£600 Per week

A large, two double-bedroom apartment in a much sought after building in Bloomsbury. The property has just had a brand new bathroom suite fitted along with a re-paint. Furnished with large proportioned rooms.

The property is well placed for ease of access to the University of London, SOAS, Birkbeck and LSE. The property is walking distance to Russell Square & King's Cross underground stations.

- Two double-bedrooms • Brand new bathroom • Large rooms •
- Separate living room • Separate kitchen • Available immediately •

Frank Harris & Co.



Total area: approx. 58.2 sq. metres (626.5 sq. feet)

Frank Harris & Co. Bloomsbury and Kings Cross
81 Marchmont Street, London,
WC1N 1AL
020 7387 0077
bloomsburylettings@frankharris.co.uk

Energy Rating: C. We aim to make our particulars both accurate and reliable. However they are not guaranteed; nor do they form part of an offer or contract. If you require clarification on any points then please contact us, especially if you're traveling some distance to view. Please note that appliances and heating systems have not been tested and therefore no warranties can be given as to their good working order.