

Frank Harris & Co.



Winston House, WC1H

£697,000

Offering this apartment conveniently located near Tavistock Square.

It comprises two double bedrooms, a separate kitchen, a private balcony off the living room, double glazing throughout and the benefit of a secluded communal garden to the rear.

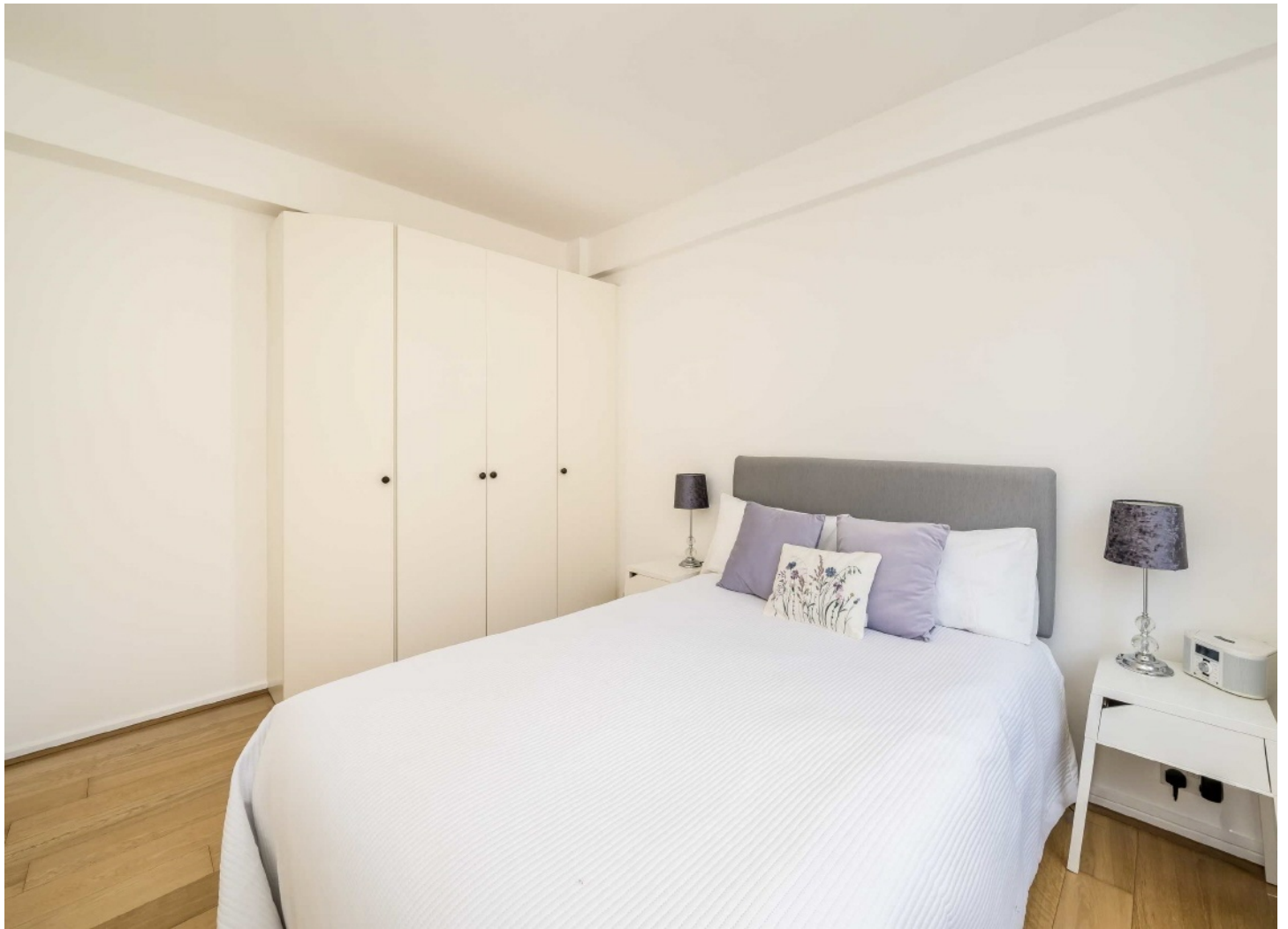


Winston House is a purpose built block located within walking distance of Euston, King's Cross/St.Pancras International and Russell Square, allowing for excellent transport services.

The development is located within close proximity of universities and hospitals. The Brunswick shopping centre and British Museum are both nearby.

- Fourth Floor • Private Balcony • Two Large Bedrooms •
 - Communal Gardens • Lift Access • Caretaker •
-

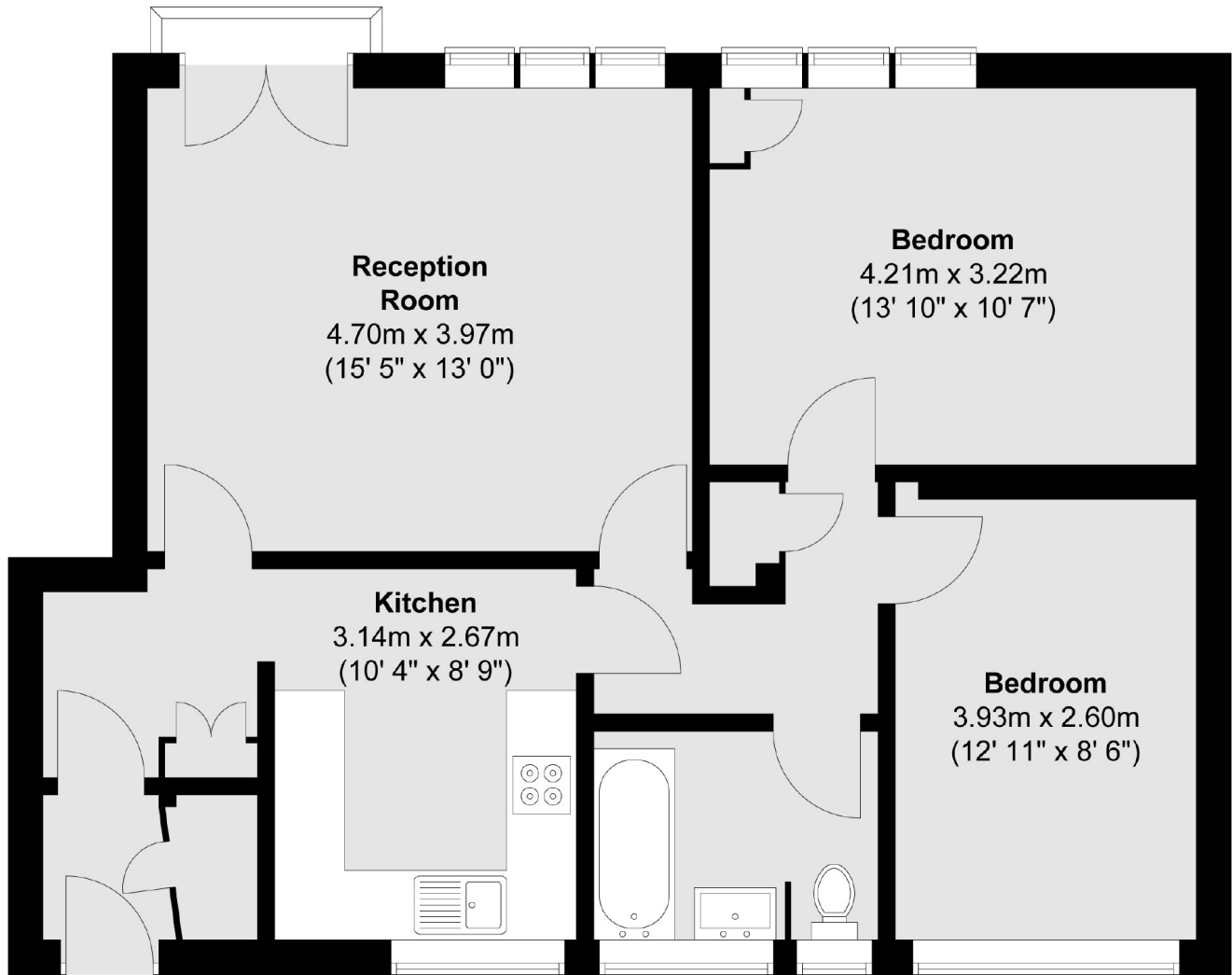






Frank Harris

& Co.



Total area (approx.) : 68.9 sq. m (742 sq. ft)
Total balcony area (approx.) : 0.5 sq. m (5 sq. ft)

Frank Harris & Co. Bloomsbury and Kings Cross
81 Marchmont Street,
London, WC1N 1AL
020 7405 4444
bloomsburysales@frankharris.co.uk

Energy Rating: . We aim to make our particulars both accurate and reliable. However they are not guaranteed; nor do they form part of an offer or contract. If you require clarification on any points then please contact us, especially if you're traveling some distance to view. Please note that appliances and heating systems have not been tested and therefore no warranties can be given as to their good working order.

