

Frank Harris & Co.



Bloomsbury, WC1H

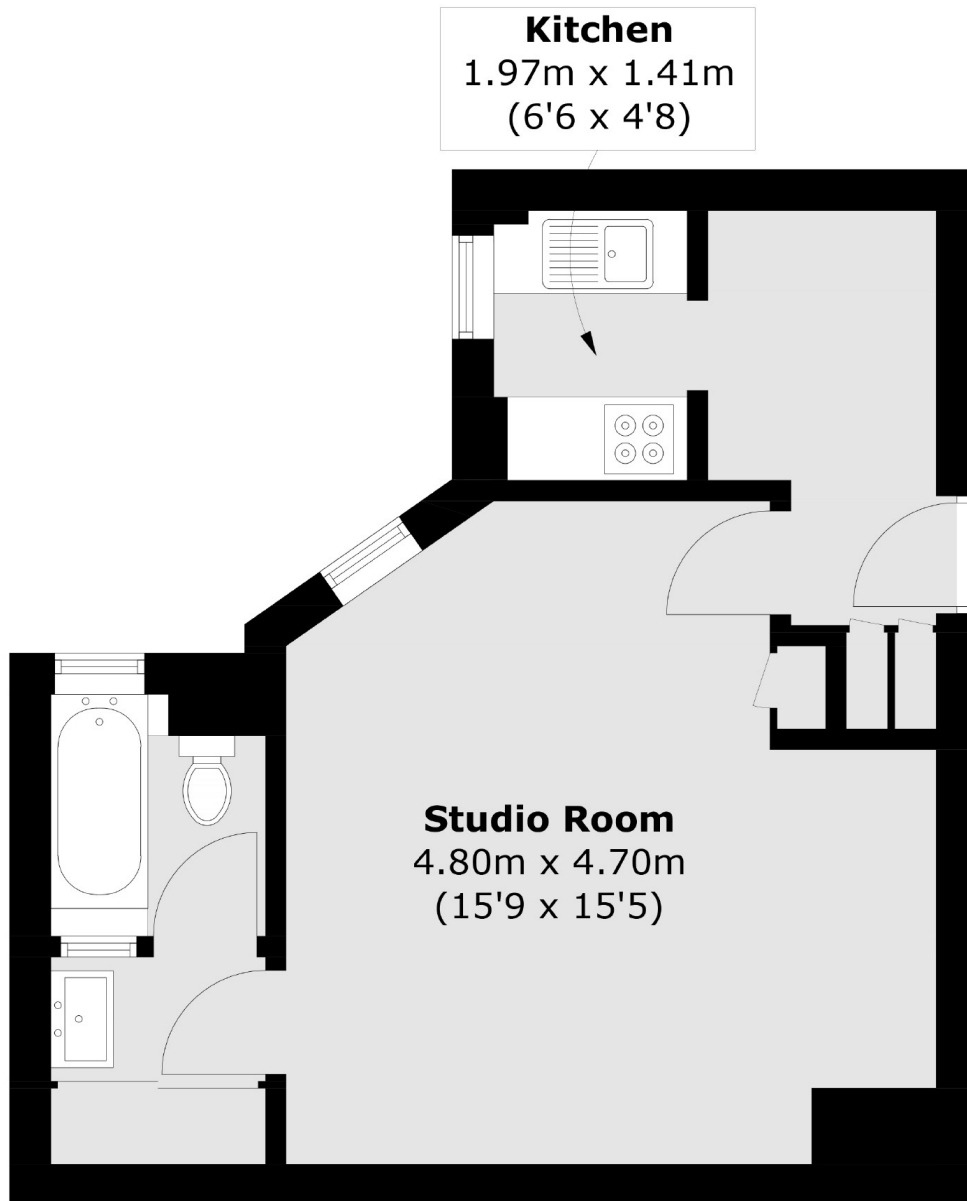
£461 Per week

A bright and particularly well-presented studio flat set on the third floor of this attractive and popular 1930s built block with day-time concierge.

Clare court is located in the heart of Bloomsbury, Close to both King's Cross and Russell Square stations. The coffee shops and boutiques of Marchmont Street, and the bars and restaurants of the Brunswick Centre are only 0.2 miles away.

- Studio • Modern • Original wooden flooring •
- Bright • Concierge • 3rd floor with lift •

Frank Harris & Co.



Total area (approx.): 34.4 sq. m (370.3 sq. ft)

Frank Harris & Co. Bloomsbury and Kings Cross
81 Marchmont Street, London,
WC1N 1AL
020 7387 0077
bloomsburylettings@frankharris.co.uk

Energy Rating: C. We aim to make our particulars both accurate and reliable. However they are not guaranteed; nor do they form part of an offer or contract. If you require clarification on any points then please contact us, especially if you're traveling some distance to view. Please note that appliances and heating systems have not been tested and therefore no warranties can be given as to their good working order.