

# Frank Harris & Co.



## Bloomsbury, WC1H

£807 Per week

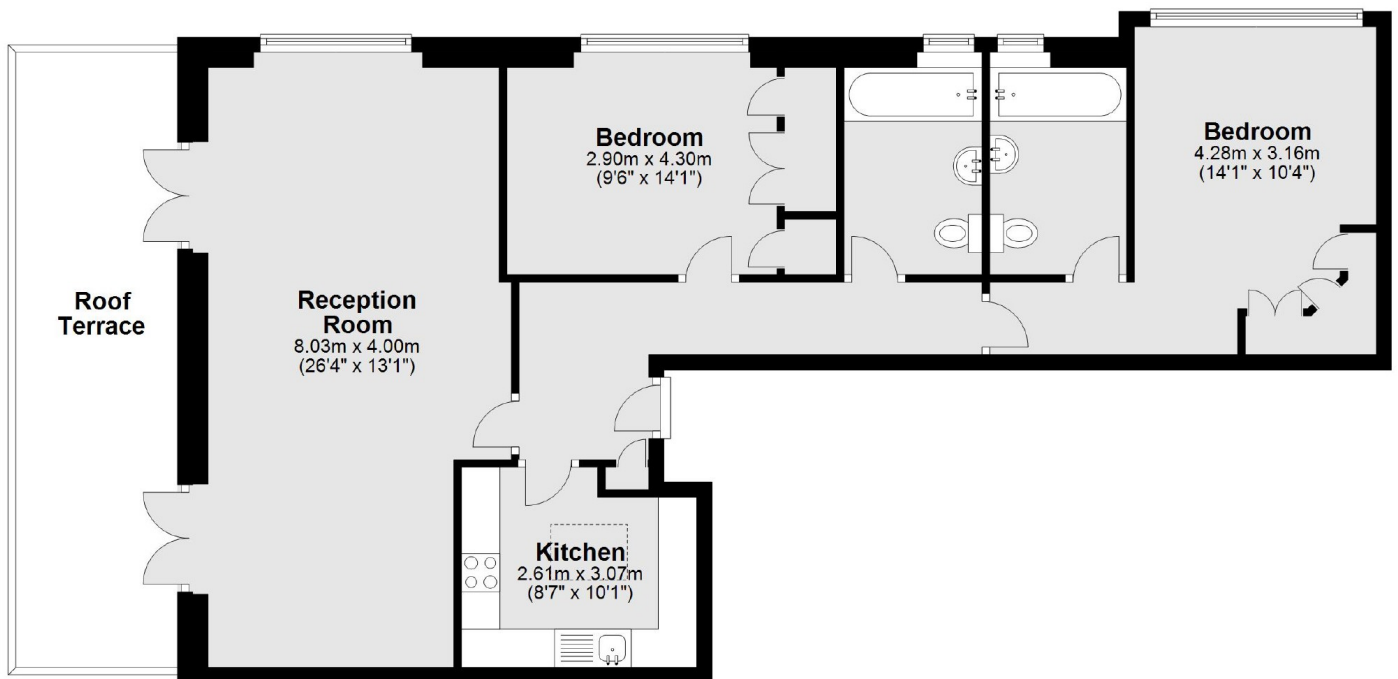
A stunning and bright two double bedroom, two bathroom flat with an amazing private terrace situated on the top-floor (with lift) of this impressive mansion block centrally located in the heart of Russell Square.

The building is located 0.2 miles from Russell Court and 0.5 miles Kings Cross Station. The cafes, coffee shops and high street of Marchmont Street is only a few hundred feet away.

- Two double bedrooms • Two bathrooms • Large private terrace •
- Separate Kitchen • Dual aspect living area • Managed By Frank Harris •

# Frank Harris & Co.

## Fourth Floor



Main area: Approx. 87.7 sq. metres (944.5 sq. feet)

Plus roof terrace, approx. 17.8 sq. metres (191.2 sq. feet)

Frank Harris & Co. Bloomsbury and Kings Cross  
81 Marchmont Street, London,  
WC1N 1AL  
020 7387 0077  
[bloomsburylettings@frankharris.co.uk](mailto:bloomsburylettings@frankharris.co.uk)

Energy Rating: D. We aim to make our particulars both accurate and reliable. However they are not guaranteed; nor do they form part of an offer or contract. If you require clarification on any points then please contact us, especially if you're traveling some distance to view. Please note that appliances and heating systems have not been tested and therefore no warranties can be given as to their good working order.

