

# Frank Harris & Co.



## Clare Court, WC1H

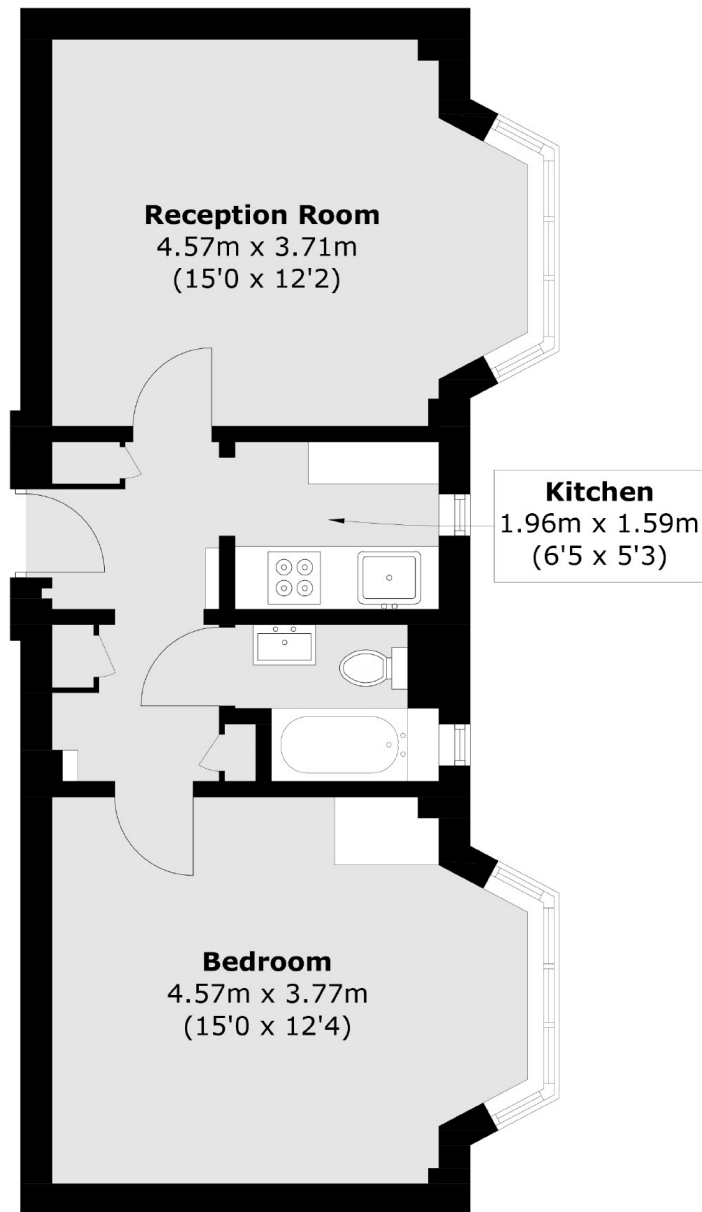
£507 Per week

A well-presented 3rd floor one bedroom property, the property comprises: Spacious reception and bedroom, separate Kitchen and modern bathroom suite. There is a concierge and heating and hot water are included

The property has a fantastic location, near both Kings Cross and Russell Square underground stations and the nearby shopping facilities of the Brunswick Centre which include a Waitrose Supermarket.

- One-Bedroom • Concierge • Art Deco Block •
- Lift Access • Transport Links • Central Location •

# Frank Harris & Co.



Total area (approx.): 44.2 sq. m (475.8 sq. ft)

Frank Harris & Co. Bloomsbury and Kings Cross  
81 Marchmont Street, London,  
WC1N 1AL  
020 7387 0077  
[bloomsburylettings@frankharris.co.uk](mailto:bloomsburylettings@frankharris.co.uk)

Energy Rating: . We aim to make our particulars both accurate and reliable. However they are not guaranteed; nor do they form part of an offer or contract. If you require clarification on any points then please contact us, especially if you're traveling some distance to view. Please note that appliances and heating systems have not been tested and therefore no warranties can be given as to their good working order.

