

Frank Harris & Co.



Bloomsbury, WC1H

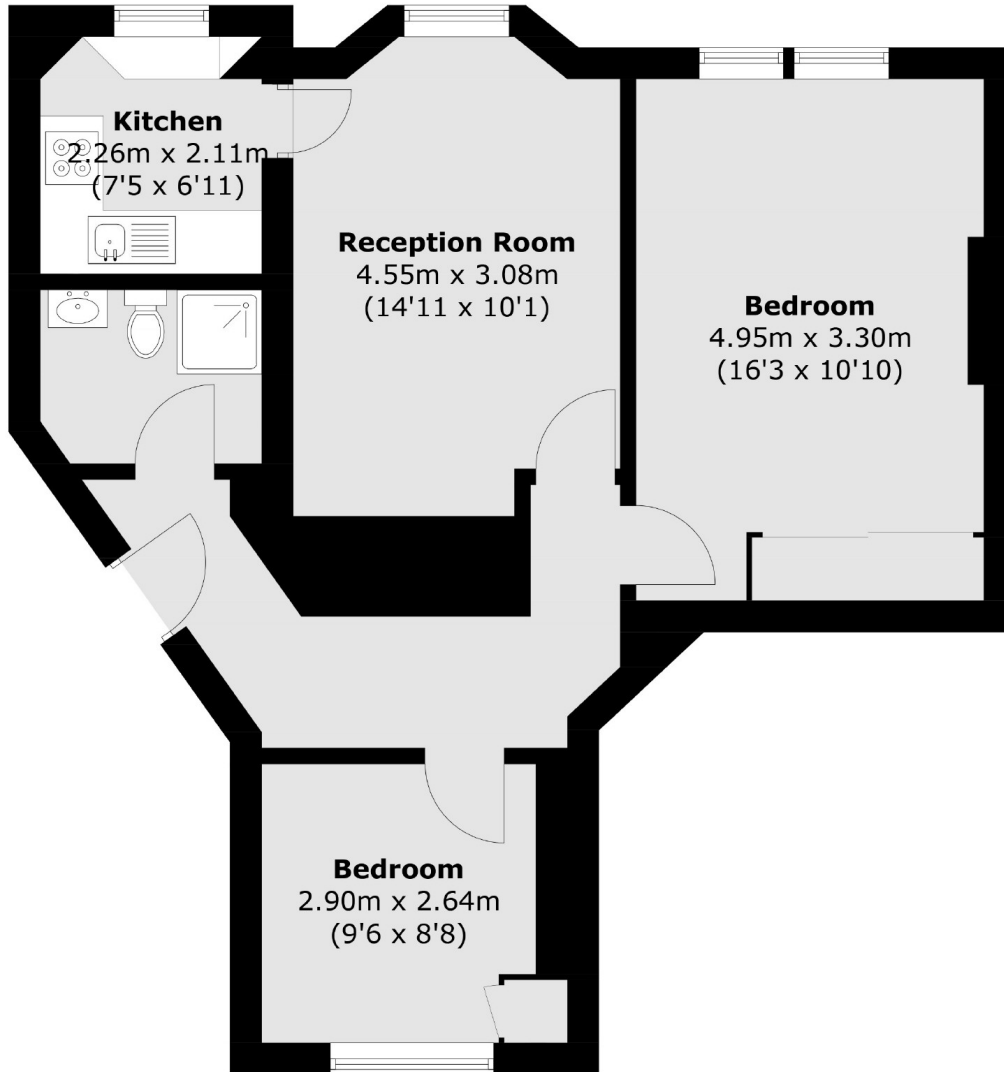
£650 Per week

A large and bright two bedroom property on the fifth floor of this popular block. The property has had a new kitchen and bathroom fitted.

Queen Alexandra Mansions is centrally located and just moments to Kings Cross, Russell Square stations and the amenities of the Brunswick Centre.

- Two double bedrooms • Modern • Central location •
- Secure building • Communal roof terrace • Fifth floor •

Frank Harris & Co.



Fifth Floor

Total area (approx.): 58.3 sq. m (627.5 sq. ft)

Frank Harris & Co. Bloomsbury and Kings Cross
81 Marchmont Street, London,
WC1N 1AL
020 7387 0077
bloomsburylettings@frankharris.co.uk

Energy Rating: C. We aim to make our particulars both accurate and reliable. However they are not guaranteed; nor do they form part of an offer or contract. If you require clarification on any points then please contact us, especially if you're traveling some distance to view. Please note that appliances and heating systems have not been tested and therefore no warranties can be given as to their good working order.

