

# Frank Harris & Co.



## Tapestry Apartments, N1C

£1,500,000

Introducing this large two bedroom apartment. This new build complex benefits from 24/7 concierge, gym facilities as well as an allocated parking space. Just shy of 1,000 sq.ft the flat is well proportioned and comprises of a second bathroom.



Canal Reach is located in Kings Cross. It is around the corner of Coal Drops Yard, a vibrant retail and dining destination, along with key transport links and attractions like the British Library. Recent redevelopment has further enhanced the area's appeal.

- Parking • Lift Access • Private Balcony •
- Concierge • Gym • New Build •





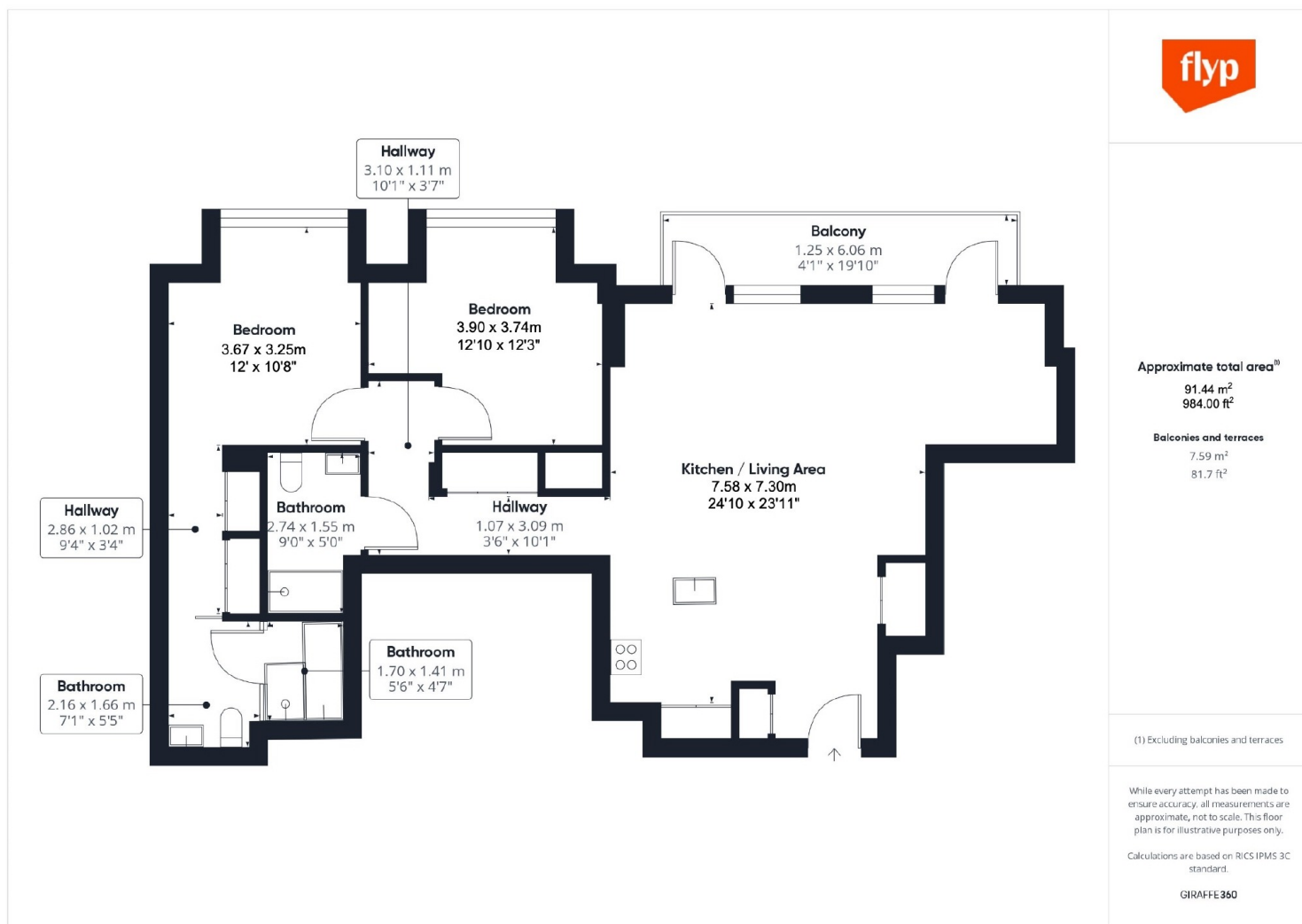








# Frank Harris & Co.



Frank Harris & Co. Bloomsbury and Kings Cross  
81 Marchmont Street,  
London, WC1N 1AL  
020 7405 4444  
bloomsburysales@frankharris.co.uk

Energy Rating: . We aim to make our particulars both accurate and reliable. However they are not guaranteed; nor do they form part of an offer or contract. If you require clarification on any points then please contact us, especially if you're traveling some distance to view. Please note that appliances and heating systems have not been tested and therefore no warranties can be given as to their good working order.

