

Frank Harris & Co.



Regent's Park, W1B

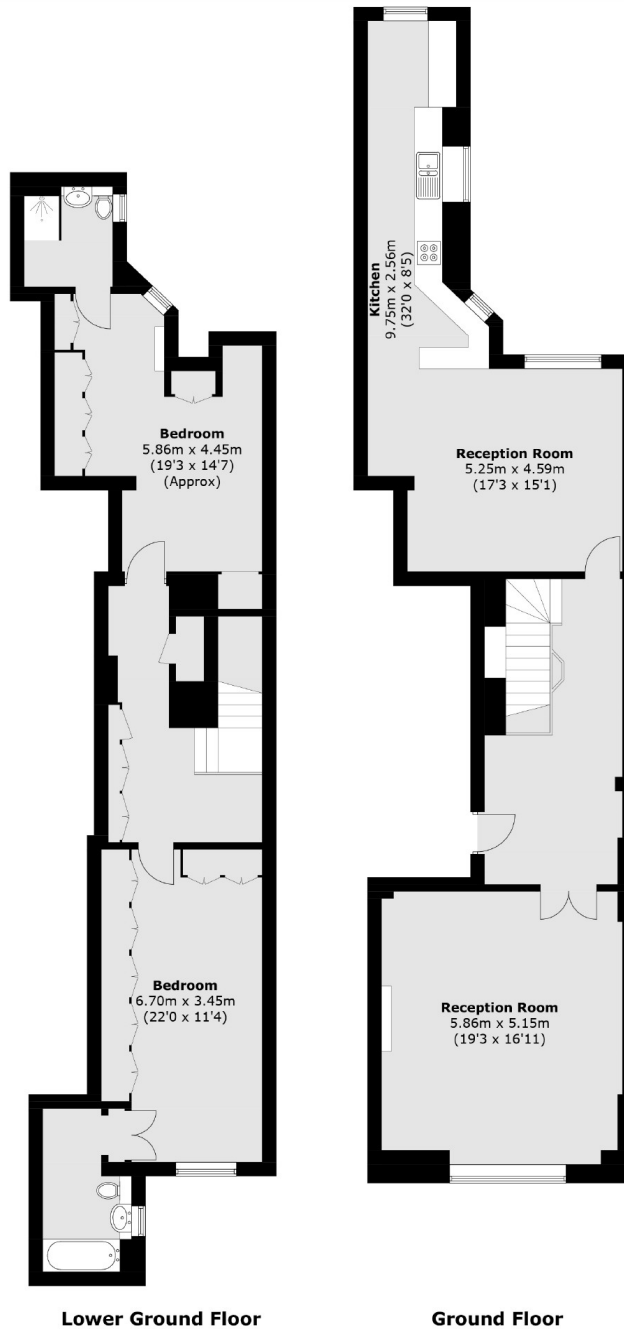
£1,615 Per week

A beautifully presented apartment located within this sought-after building. Spanning two floors, the apartment has a homely feel contrary to its enviable location. With modern fixtures and fittings, along with access to the prestigious private gardens, it is a must see.

73 Portland Place is located 150 yards to the private gardens and runs parallel to Harley Street. Regents Park and Great Portland Street Stations are only 0.2 miles away. Regents Park is at the end of the road.

- Two Double Bedrooms • Split-Level • 24hr Concierge •
- En-Suite Bathrooms • Built-in Storage • Furniture Flexible •

Frank Harris & Co.



Total area (approx.): 159.5sq. m (1716.8 sq. ft)

Frank Harris & Co. Bloomsbury and Kings Cross
81 Marchmont Street, London,
WC1N 1AL
020 7387 0077
bloomsburylettings@frankharris.co.uk

Energy Rating: C. We aim to make our particulars both accurate and reliable. However they are not guaranteed; nor do they form part of an offer or contract. If you require clarification on any points then please contact us, especially if you're traveling some distance to view. Please note that appliances and heating systems have not been tested and therefore no warranties can be given as to their good working order.

