

Frank Harris

— & Co. —



Grenville Street, WC1N

£800,000

Introduced to the market is this stunning two-bedroom apartment located in the heart of Bloomsbury. Spanning over 630 sq.ft, this recently developed flat boasts a modern interior situated behind a period facade. Property comprises: two double bedrooms, a large living room and a small patio.

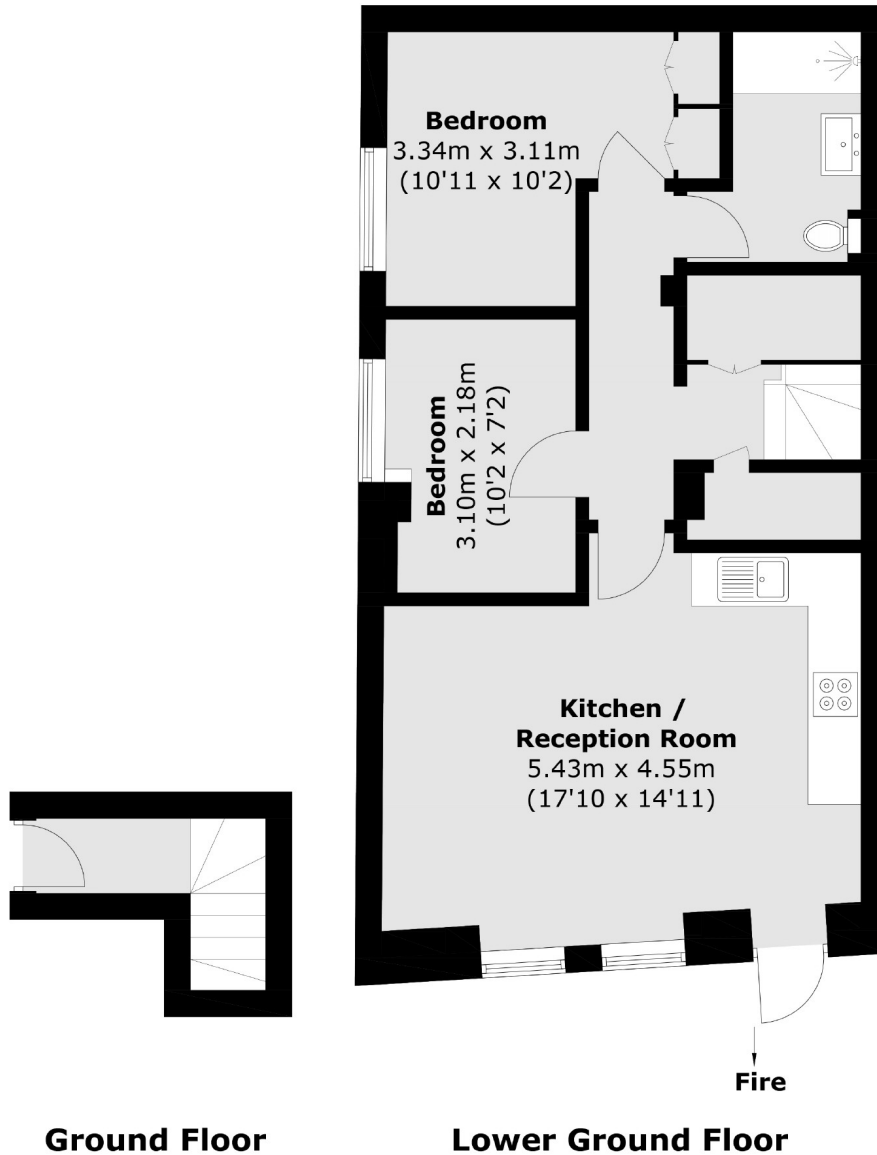


Grenville Street is ideally located just under 200 meters from Russell Square Underground Station, and within close proximity to The Brunswick Centre, offering a variety of shops, restaurants, and a large Waitrose.

- Modern Finish • High Spec • Two Double Bedrooms •
 - Excellent Central Location • No Onward Chain • Patio •
-



Frank Harris & Co.



Total area (approx.): 59.2 sq. m (637.2 sq. ft)

Frank Harris & Co. Bloomsbury and Kings Cross
81 Marchmont Street,
London, WC1N 1AL
020 7405 4444
bloomsburysales@frankharris.co.uk

Energy Rating: C. We aim to make our particulars both accurate and reliable. However they are not guaranteed; nor do they form part of an offer or contract. If you require clarification on any points then please contact us, especially if you're traveling some distance to view. Please note that appliances and heating systems have not been tested and therefore no warranties can be given as to their good working order.

