

# Frank Harris & Co.



## Clare Court, WC1H

£600,000

This two bedroom apartment in the 1960s extension to the original 1930s building. This flat has been beautifully renovated to a high and modern standard. The property boasts of natural light as it is west facing and on the fifth floor. Key benefits include no onward chain, an extended lease and concierge services.



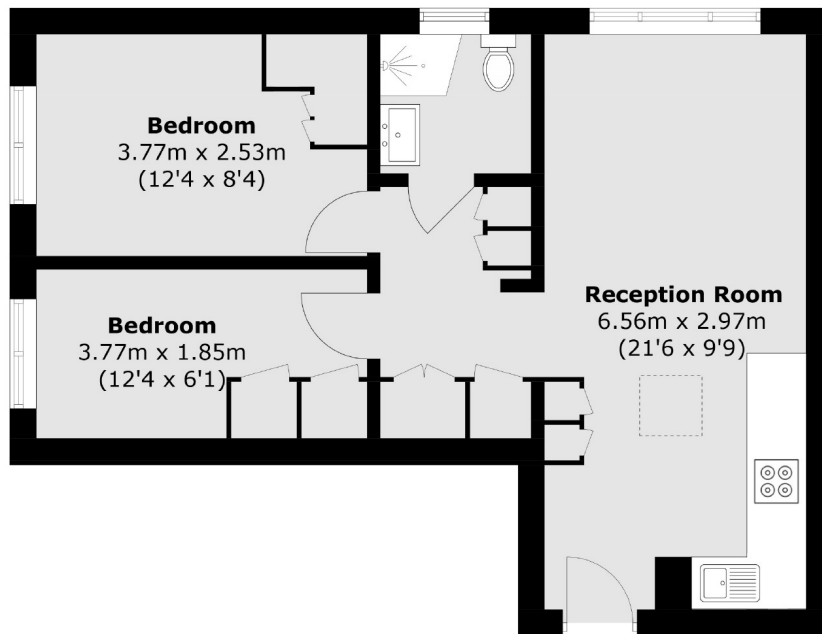


Judd Street is positioned north of the Brunswick Centre, close to Tavistock Place, with convenient access to nearby Underground stations at Russell Square, Euston, and King's Cross/St Pancras.

- Extended Lease • Lift Access • Modernly Refurbished •
- Concierge • Fifth Floor • No Onward Chain •



# Frank Harris & Co.



Total area (approx.): 46.4 sq. m (499.4 sq. ft)

Frank Harris & Co. Bloomsbury and Kings Cross  
81 Marchmont Street,  
London, WC1N 1AL  
020 7405 4444  
[bloomsburysales@frankharris.co.uk](mailto:bloomsburysales@frankharris.co.uk)

Energy Rating: . We aim to make our particulars both accurate and reliable. However they are not guaranteed; nor do they form part of an offer or contract. If you require clarification on any points then please contact us, especially if you're traveling some distance to view. Please note that appliances and heating systems have not been tested and therefore no warranties can be given as to their good working order.

