

Frank Harris & Co.



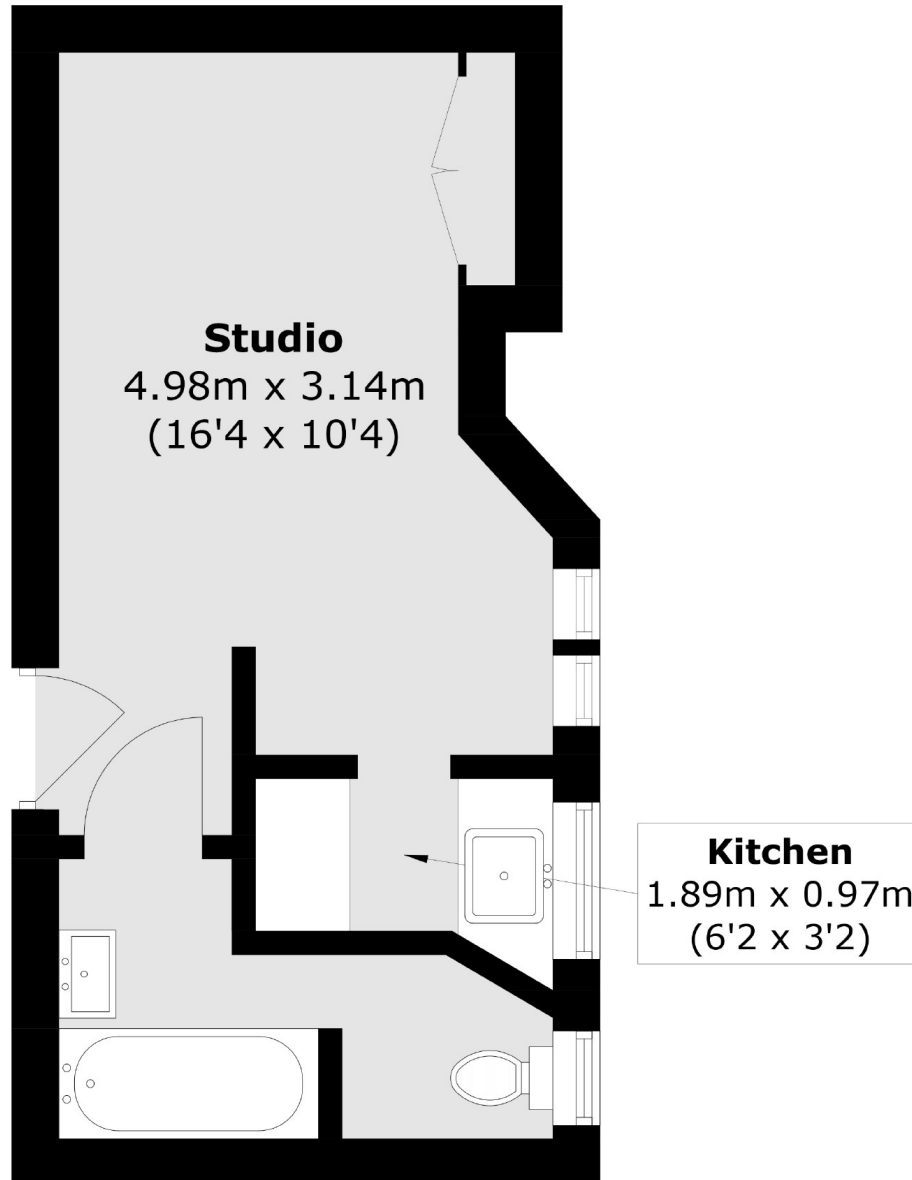
Jenner House, WC1N

£260,000

Offered to the market is this well presented and east facing studio flat on the first floor (with lift) of this well regarded Edwardian mansion block in the heart of Bloomsbury. The property comprises large kitchen area, separate bathroom, double glazed windows, wooden flooring throughout and plenty of storage. Key benefits include an on site caretaker and no onward chain.

Jenner House is set within central Bloomsbury close to The Brunswick Centre, Russell Square underground and numerous shops, bars and restaurants. It is situated a 5 minutes walk from Kings Cross underground as well as St. Pancras International stations. The property is easily accessible to a dozen of London's top universities as well as corporate headquarters such as Google and TikTok.

Frank Harris & Co.



Total area (approx.): 20.7 sq. m (222.8 sq. ft)

Frank Harris & Co. Bloomsbury and Kings Cross
81 Marchmont Street,
London, WC1N 1AL
020 7405 4444
bloomsburysales@frankharris.co.uk

Energy Rating: F. We aim to make our particulars both accurate and reliable. However they are not guaranteed; nor do they form part of an offer or contract. If you require clarification on any points then please contact us, especially if you're traveling some distance to view. Please note that appliances and heating systems have not been tested and therefore no warranties can be given as to their good working order.

