

Frank Harris & Co.



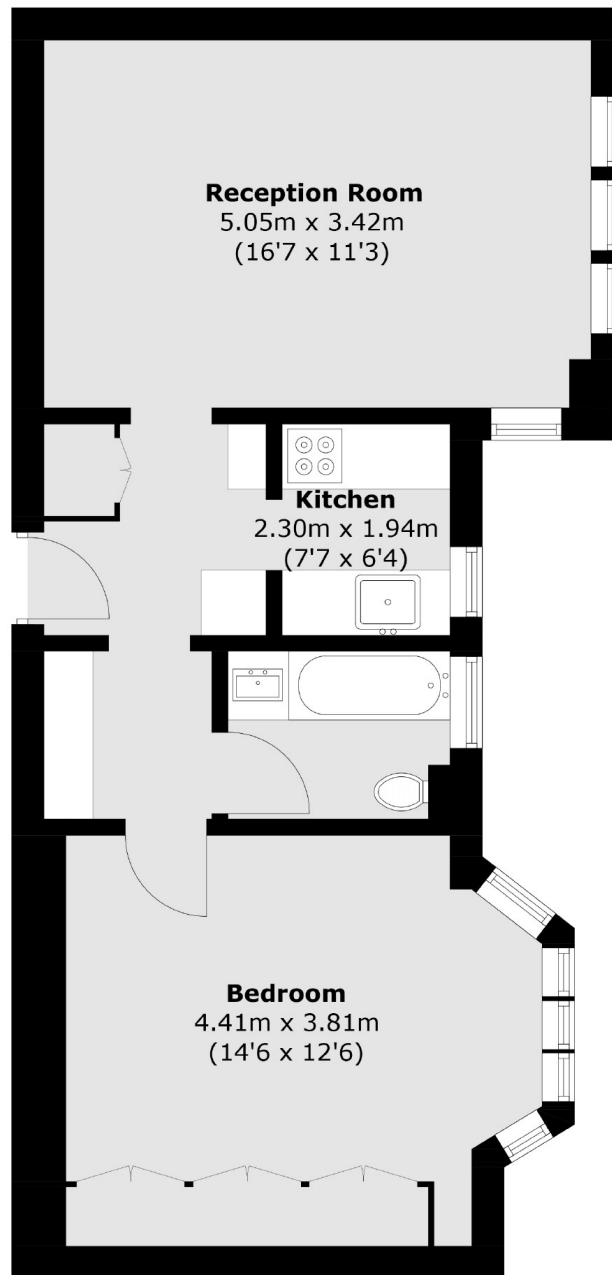
Clare Court, WC1H

£395,000

Offered to the market is this one-bedroom property situated within a purpose-built 1930's Art Deco block, Clare Court. This fourth-floor property comprises a large bedroom, reception and a separate kitchen. The development has had a lot of work carried out recently including; two newly-installed lifts, secure cycle parking and a porter on site to help handle the day-to-day running of the building. The communal spaces of Clare Court are due to be completed with a full refurbishment and redecoration.

Clare Court is situated in the heart of Bloomsbury on Judd Street. The local shopping amenities and restaurants of Bloomsbury and the West End are all close by. Euston, King's Cross, St Pancras International and Russell Square are stations that service the area.

Frank Harris & Co.



Total area (approx.): 47.5 sq. m (511.3 sq. ft)

Frank Harris & Co. Bloomsbury and Kings Cross
81 Marchmont Street,
London, WC1N 1AL
020 7405 4444
bloomsburysales@frankharris.co.uk

Energy Rating: D. We aim to make our particulars both accurate and reliable. However they are not guaranteed; nor do they form part of an offer or contract. If you require clarification on any points then please contact us, especially if you're traveling some distance to view. Please note that appliances and heating systems have not been tested and therefore no warranties can be given as to their good working order.

