

Frank Harris

— & Co. —



Cubitt Street, WC1X

£525,000

This charming ground-floor, one-bedroom flat boasts a modern open-plan kitchen/living room and access to a communal garden. This property benefits from having no onward chain and a low service charge

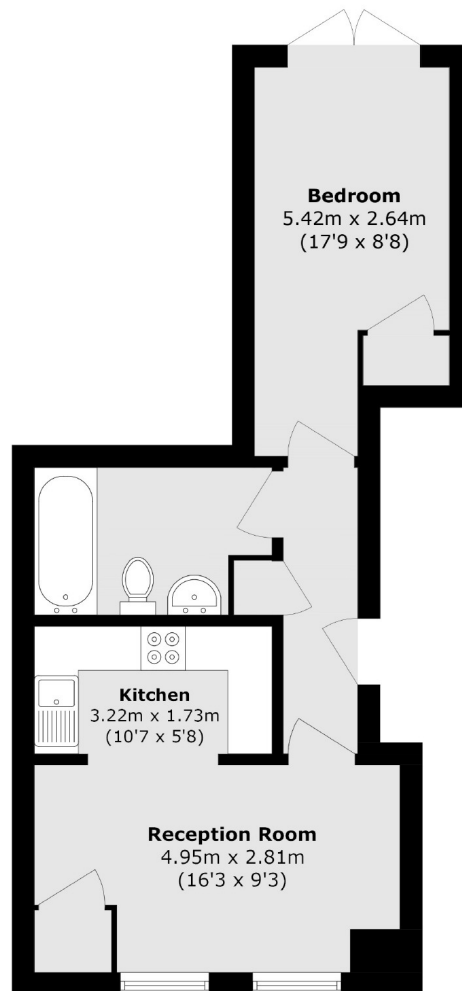


The property is located within a mile's radius of King's Cross Station and Russell Square Underground Station, providing convenient access to the amenities of Islington and Angel.

- Share Freehold • Communal Garden • Central Location •
- No Onward Chain • Low Service Charge • Close To Station •



Frank Harris & Co.



Total area (approx.): 44.5 sq. m (478.9 sq. ft)

Frank Harris & Co. Bloomsbury and Kings Cross
81 Marchmont Street,
London, WC1N 1AL
020 7405 4444
bloomsburysales@frankharris.co.uk

Energy Rating: . We aim to make our particulars both accurate and reliable. However they are not guaranteed; nor do they form part of an offer or contract. If you require clarification on any points then please contact us, especially if you're traveling some distance to view. Please note that appliances and heating systems have not been tested and therefore no warranties can be given as to their good working order.

