

Frank Harris

— & Co. —



Fletcher Buildings, WC2B

£500,000

A one bedroom apartment located in a gated development moments from Covent Garden's Piazza and London's Theatreland. This modern flat has beautifully renovated with an industrial elegance and is perfectly used as a pied-à-terre.



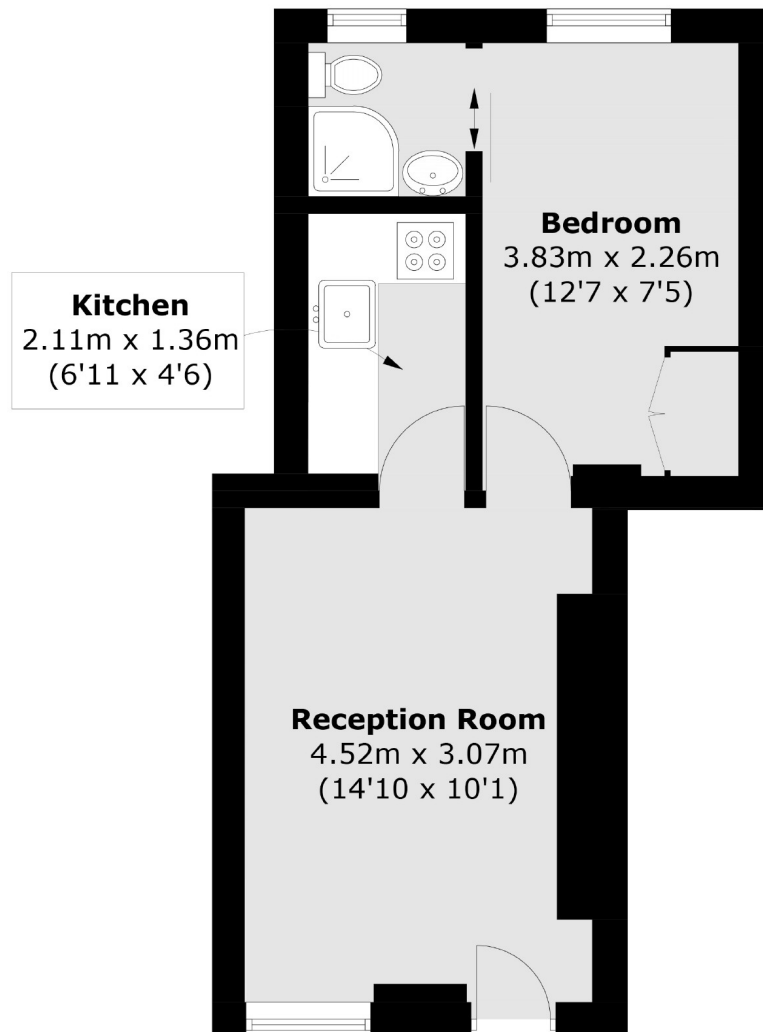
Fletcher Buildings is quiet residential location just off Drury Lane. It is near key attractions such as the Royal Opera House and Covent Garden Market, and benefits from excellent transport links, including nearby tube stations such as Holborn and Covent Garden.

- Communal Gardens • Gated Private Courtyard • Modern Interior •
 - Over 110 Year Lease • Central Location • Ground Floor •
-





Frank Harris & Co.



Total area (approx.): 28.7 sq. m (308.9 sq. ft)

Frank Harris & Co. Bloomsbury and Kings Cross
81 Marchmont Street,
London, WC1N 1AL
020 7405 4444
bloomsburysales@frankharris.co.uk

Energy Rating: . We aim to make our particulars both accurate and reliable. However they are not guaranteed; nor do they form part of an offer or contract. If you require clarification on any points then please contact us, especially if you're traveling some distance to view. Please note that appliances and heating systems have not been tested and therefore no warranties can be given as to their good working order.

