

# Frank Harris & Co.



## Bloomsbury, WC1N

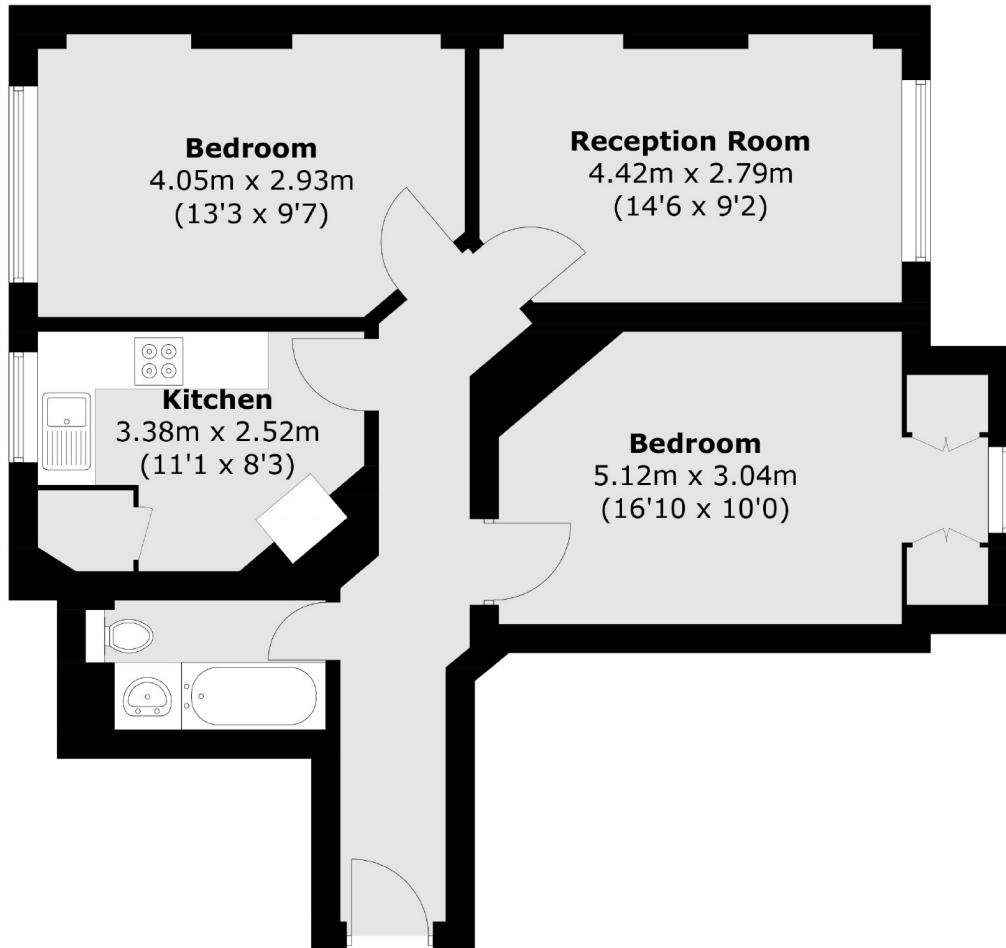
£692 Per week

A spacious two bedroom flat in this attractive period mansion block conveniently located for both Russell Sq. & Kings Cross stations, as well as SOAS, UCL & LSE.

Jenner House is located in the heart of Bloomsbury with a wide array of shops and local amenities including the Brunswick Center with large super market and local cinema.

- Two double bedrooms • Separate Kitchen • Central Location •
- Secure building • Furnished • Managed by Frank Harris •

# Frank Harris & Co.



## Lower Ground Floor

Total area (approx.): 63.8 sq. m (686.7 sq. ft)

Frank Harris & Co. Bloomsbury and Kings Cross  
81 Marchmont Street, London,  
WC1N 1AL  
020 7387 0077  
[bloomsburylettings@frankharris.co.uk](mailto:bloomsburylettings@frankharris.co.uk)

Energy Rating: D. We aim to make our particulars both accurate and reliable. However they are not guaranteed; nor do they form part of an offer or contract. If you require clarification on any points then please contact us, especially if you're traveling some distance to view. Please note that appliances and heating systems have not been tested and therefore no warranties can be given as to their good working order.

