

Frank Harris & Co.



Covent Garden, WC2R

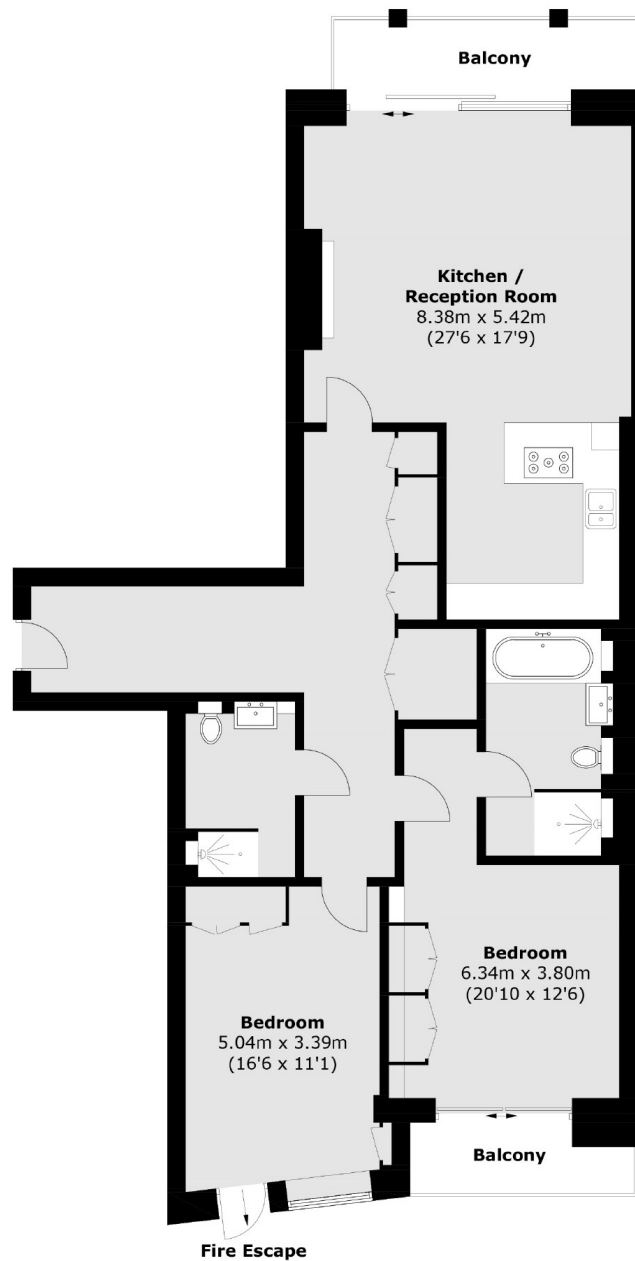
£1,730 Per week

A stunning two-bedroom, 1200 sq foot, lateral flat. Based in this much sought-after building and situated in a historic part of London. The property has access to top-end leisure facilities and a 24hr concierge.

190 Strand is located 400 feet from Temple Station and The Thames. Covent Garden is just half a mile away and Leicester Square is just 0.7 miles away.

- Highly sought after building • Spa facilities • 24hr concierge •
- Two bedrooms • Two bathrooms • Underfloor heating •

Frank Harris & Co.



Total area (approx.): 112.8 sq. m (1,214.1 sq. ft)
Balcony area : 11.2 sq. m (120.5 sq. ft)

Frank Harris & Co. Bloomsbury and Kings Cross
81 Marchmont Street, London,
WC1N 1AL
020 7387 0077
bloomsburylettings@frankharris.co.uk

Energy Rating: B. We aim to make our particulars both accurate and reliable. However they are not guaranteed; nor do they form part of an offer or contract. If you require clarification on any points then please contact us, especially if you're traveling some distance to view. Please note that appliances and heating systems have not been tested and therefore no warranties can be given as to their good working order.

