

# Frank Harris & Co.



## Judd Street, WC1H

£900,000

A distinguished split-level two-bedroom period property with private outside space, set in the heart of Bloomsbury. This elegant residence combines period charm with modern sophistication. The property comprises of two large bedrooms, two stylishly appointed bathrooms, a separate kitchen. A secluded outdoor area can be found adjacent to the living room and the kitchen. Key benefits include high ceilings, no onward chain and a share of the freehold.



Judd Street is located within walking distance of Bloomsbury's cultural landmarks, including the British Museum, UCL, and the West End, this home offers an exceptional lifestyle, combining heritage, modern living, and urban convenience. With excellent transport links nearby, this is a rare opportunity to secure a distinguished residence in one of London's most desirable locations.

- Share of the Freehold • Private Courtyard • No Onward Chain •
- Period Property • Split-Level • High Ceilings •



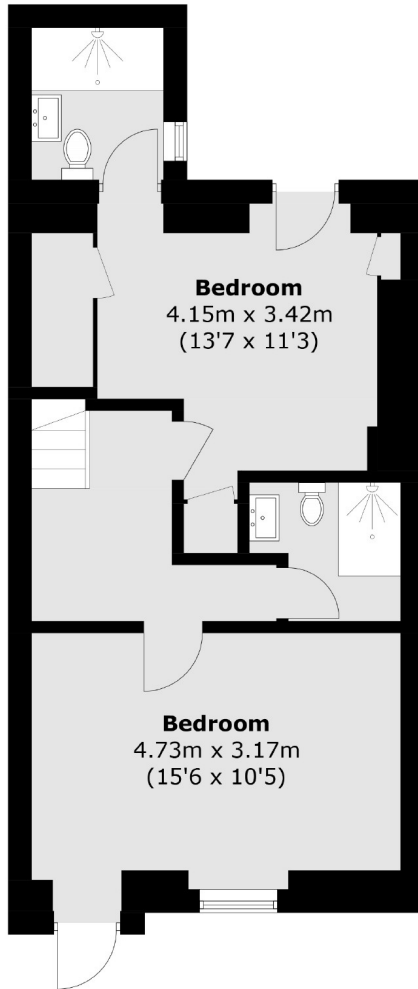




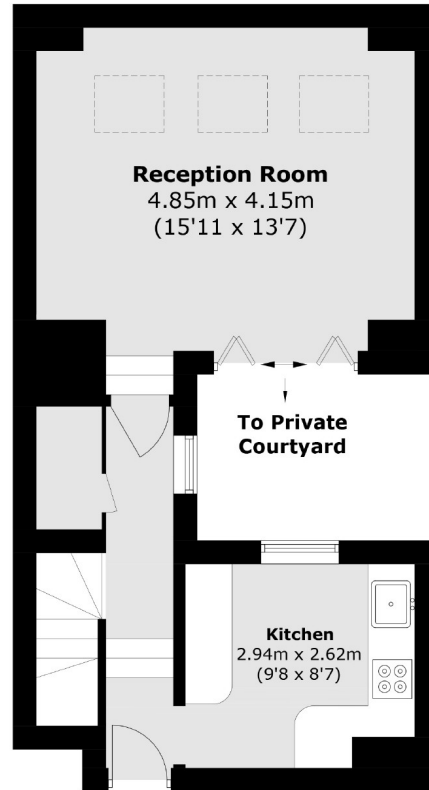




# Frank Harris & Co.



**Lower Ground Floor**



**Ground Floor**

Total area (approx.): 83.5 sq. m (898.7 sq. ft)

Frank Harris & Co. Bloomsbury and Kings Cross  
81 Marchmont Street,  
London, WC1N 1AL  
020 7405 4444  
bloomsburysales@frankharris.co.uk

Energy Rating: E. We aim to make our particulars both accurate and reliable. However they are not guaranteed; nor do they form part of an offer or contract. If you require clarification on any points then please contact us, especially if you're traveling some distance to view. Please note that appliances and heating systems have not been tested and therefore no warranties can be given as to their good working order.

