

Frank Harris & Co.



Downing Court, WC1N

£575,000

Introducing this large one bedroom apartment. Set in this rare to market 1930's Mansion Block, this home comprises of a separate kitchen, a family bathroom, a double bedroom and plenty of built in storage. Over 550 sq.ft, keys features include high ceilings, wooden flooring and Grade II listed.

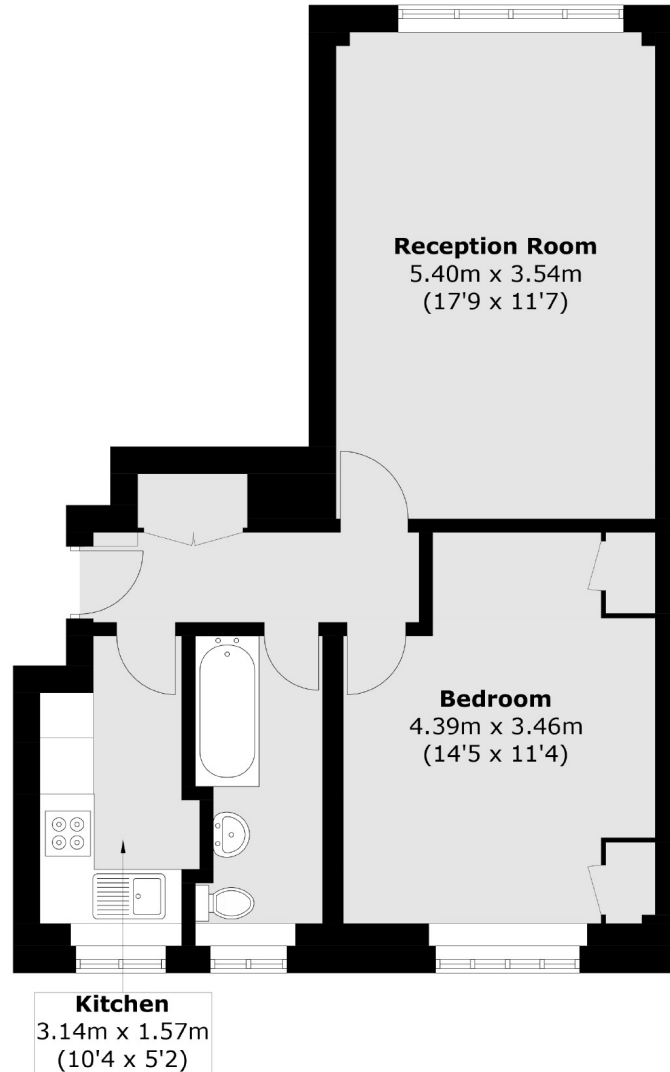


Downing Court is located extremely close to the Brunswick Centre where an abundance of local amenities can be found. It is also nearby to Russell Square and King's Cross St Pancras International, providing an array of transport links.

- Share Of The Freehold • Portered Building • No Onward Chain •
- 1930's Mansion Block • One Double Bedroom • Communal Terrace •



Frank Harris & Co.



Total area (approx.): 51.4 sq. m (553.2 sq. ft)

Frank Harris & Co. Bloomsbury and Kings Cross
81 Marchmont Street,
London, WC1N 1AL
020 7405 4444
bloomsburysales@frankharris.co.uk

Energy Rating: . We aim to make our particulars both accurate and reliable. However they are not guaranteed; nor do they form part of an offer or contract. If you require clarification on any points then please contact us, especially if you're traveling some distance to view. Please note that appliances and heating systems have not been tested and therefore no warranties can be given as to their good working order.

