

Frank Harris & Co.



Jessel House, WC1H

£600,000

Introducing this rare to the market large one bedroom apartment. Situated on the top floor of this lift accessible mansion block, this one bedroom enjoys plenty of natural light and has ample living space. City and central London views available in this dual aspect flat.

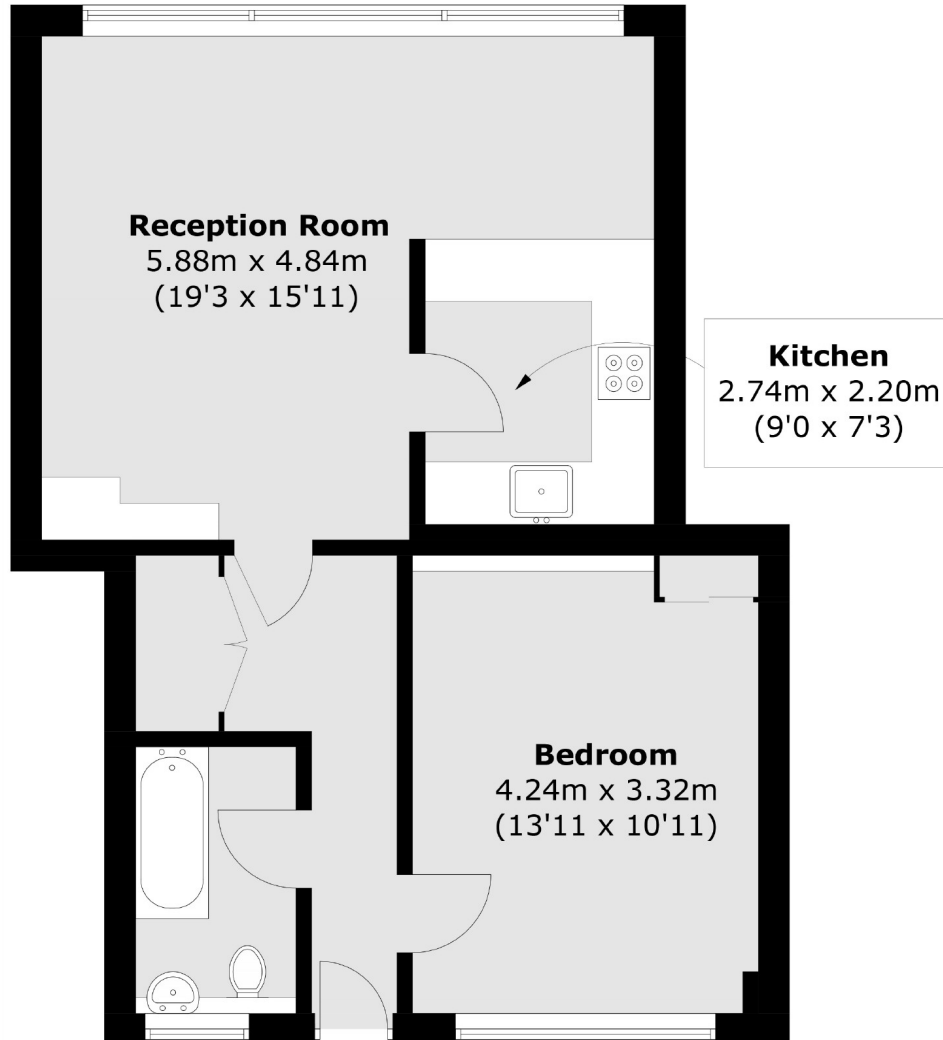


Jessel House is a short walk away from Russell Square and King's Cross/ St Pancras stations. Local amenities can be found on Marchmont Street and at The Brunswick Centre shopping centre.

- Top Floor • Lift Access • No Onward Chain •
- Extended Lease • Period Mansion Block • Modern Interior •



Frank Harris & Co.



Total area (approx.): 55.6 sq. m (598.5 sq. ft)

Frank Harris & Co. Bloomsbury and Kings Cross
81 Marchmont Street,
London, WC1N 1AL
020 7405 4444
bloomsburysales@frankharris.co.uk

Energy Rating: . We aim to make our particulars both accurate and reliable. However they are not guaranteed; nor do they form part of an offer or contract. If you require clarification on any points then please contact us, especially if you're traveling some distance to view. Please note that appliances and heating systems have not been tested and therefore no warranties can be given as to their good working order.

