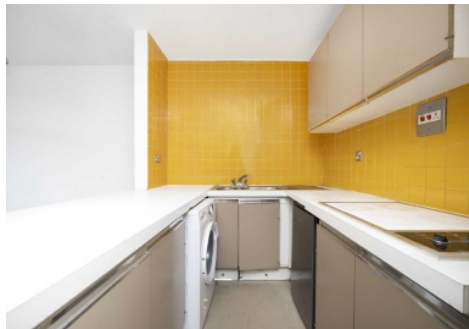


Frank Harris & Co.



Grafton Way, WC1E

£450,000

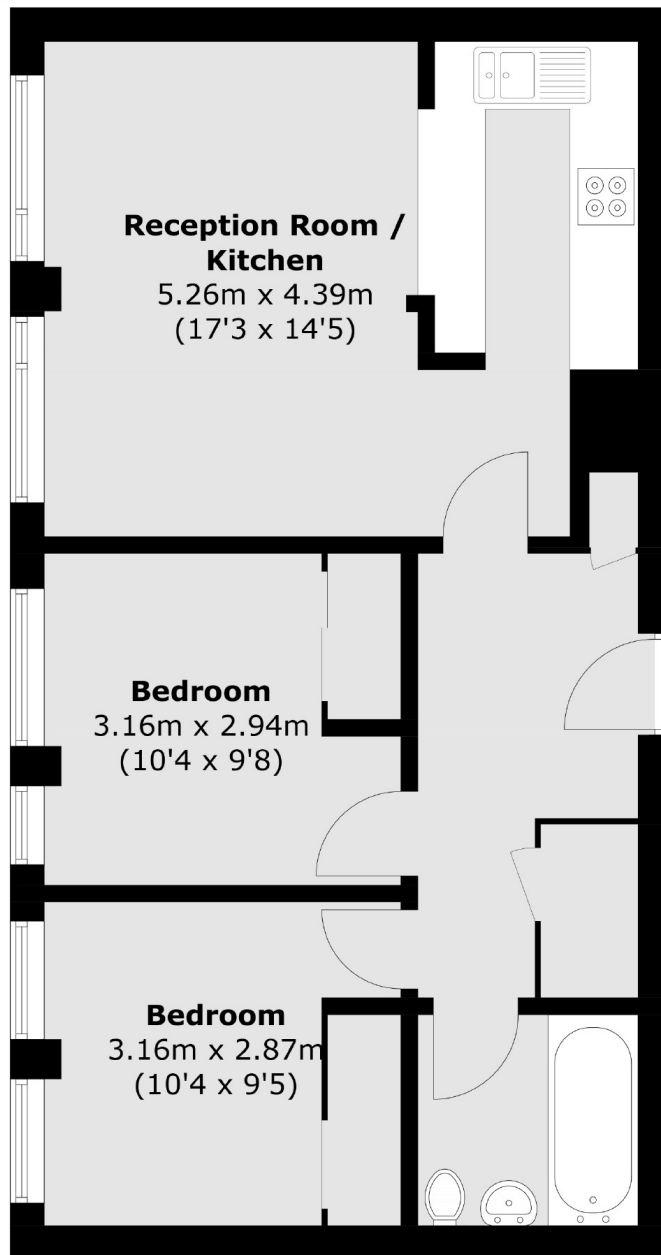
This spacious two-bedroom flat offers a fantastic opportunity for renovation enthusiasts or investors looking to create their dream home in a sought-after location.

The area surrounding Grafton Way is known for its vibrant and eclectic atmosphere, with a mix of independent shops, cafes, restaurants and transport links.

- No Onward Chain • Lift Access • Fitzrovia •
- 2nd Floor • 49 Year Lease • Excellent Transport Links •

Frank Harris

& Co.



Total area (approx.): 55.4 sq. m (596.3 sq. ft)

Frank Harris & Co. Bloomsbury and Kings Cross
81 Marchmont Street,
London, WC1N 1AL
020 7405 4444
bloomsburysales@frankharris.co.uk

Energy Rating: . We aim to make our particulars both accurate and reliable. However they are not guaranteed; nor do they form part of an offer or contract. If you require clarification on any points then please contact us, especially if you're traveling some distance to view. Please note that appliances and heating systems have not been tested and therefore no warranties can be given as to their good working order.

