

Frank Harris & Co.



Fitzrovia, WC1E

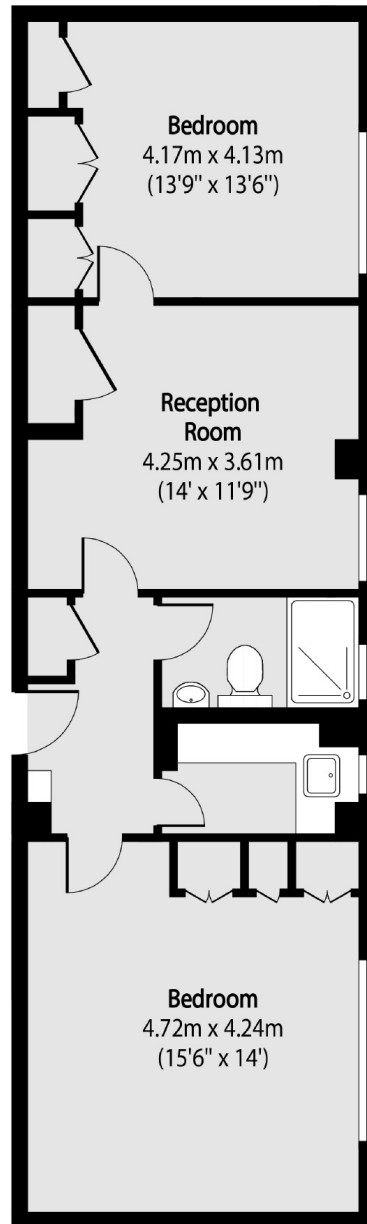
£923 Per week

A beautifully refurbished and spacious two double-bedroom property in the heart of central London. The accommodation comprises a reception room, separate kitchen two double-bedrooms and plenty of storage throughout. Heating and hot water included and day porter.

Located next to the famous Tottenham Court Road, this property is ideally located for access to fantastic shopping, restaurants and coffee-shops. Oxford Street 0.5 miles away.

- Fully Refurbished • Wooden-Flooring Throughout • Managed by Frank Harris •
- Secure Building • Porter • Heating and Hot-Water Inc •

Frank Harris & Co.



Total area (approx): 63.42 sq m (683 sq. ft)

Frank Harris & Co. Bloomsbury and Kings Cross
81 Marchmont Street, London,
WC1N 1AL
020 7387 0077
bloomsburylettings@frankharris.co.uk

Energy Rating: D. We aim to make our particulars both accurate and reliable. However they are not guaranteed; nor do they form part of an offer or contract. If you require clarification on any points then please contact us, especially if you're traveling some distance to view. Please note that appliances and heating systems have not been tested and therefore no warranties can be given as to their good working order.

