

Frank Harris & Co.



Russell Square Mansions, WC1B

£950,000

Introducing this elegant, well proportioned two bedroom apartment located in the heart of Bloomsbury. Situated in a highly sought after Victorian mansion block on the famous Southampton Row, it retains the period features you would expect to find. This includes high ceilings, original wood flooring and gorgeous period fireplaces.



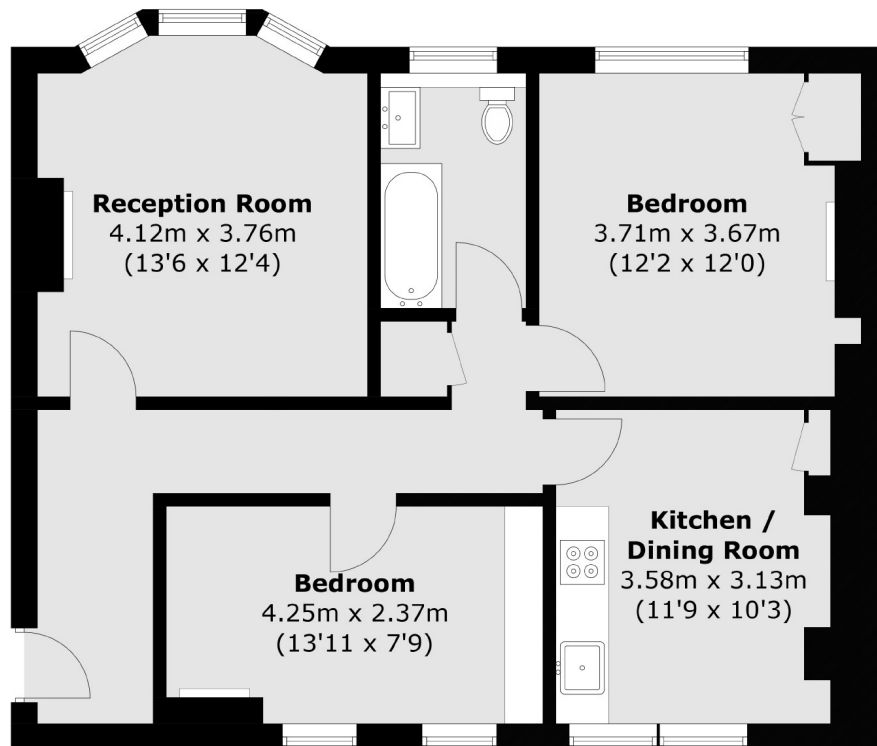
The property comprises two double bedrooms. A kitchen and dining space, separate living room and bathroom. The apartment benefits from large integrated storage spaces in the kitchen, hallway and bedroom, beautifully maintained communal areas and lift access.

Situated just minutes from Russell Square and Holborn Underground Station, the apartment is only a short stroll from all the local amenities of Clerkenwell and Bloomsbury. The rest of West End is also within walking distance, as are the stations of Euston and Kings Cross-St. Pancras, serving the national and international commute.

- Period Block • No Chain • Long Lease •
 - High Ceilings • Lift Access • Transport Links Nearby •
-



Frank Harris & Co.



Total area (approx.): 69.3 sq. m (745.9 sq. ft)

Frank Harris & Co. Bloomsbury and Kings Cross
81 Marchmont Street,
London, WC1N 1AL
020 7405 4444
bloomsburysales@frankharris.co.uk

Energy Rating: C. We aim to make our particulars both accurate and reliable. However they are not guaranteed; nor do they form part of an offer or contract. If you require clarification on any points then please contact us, especially if you're traveling some distance to view. Please note that appliances and heating systems have not been tested and therefore no warranties can be given as to their good working order.

