

Frank Harris & Co.



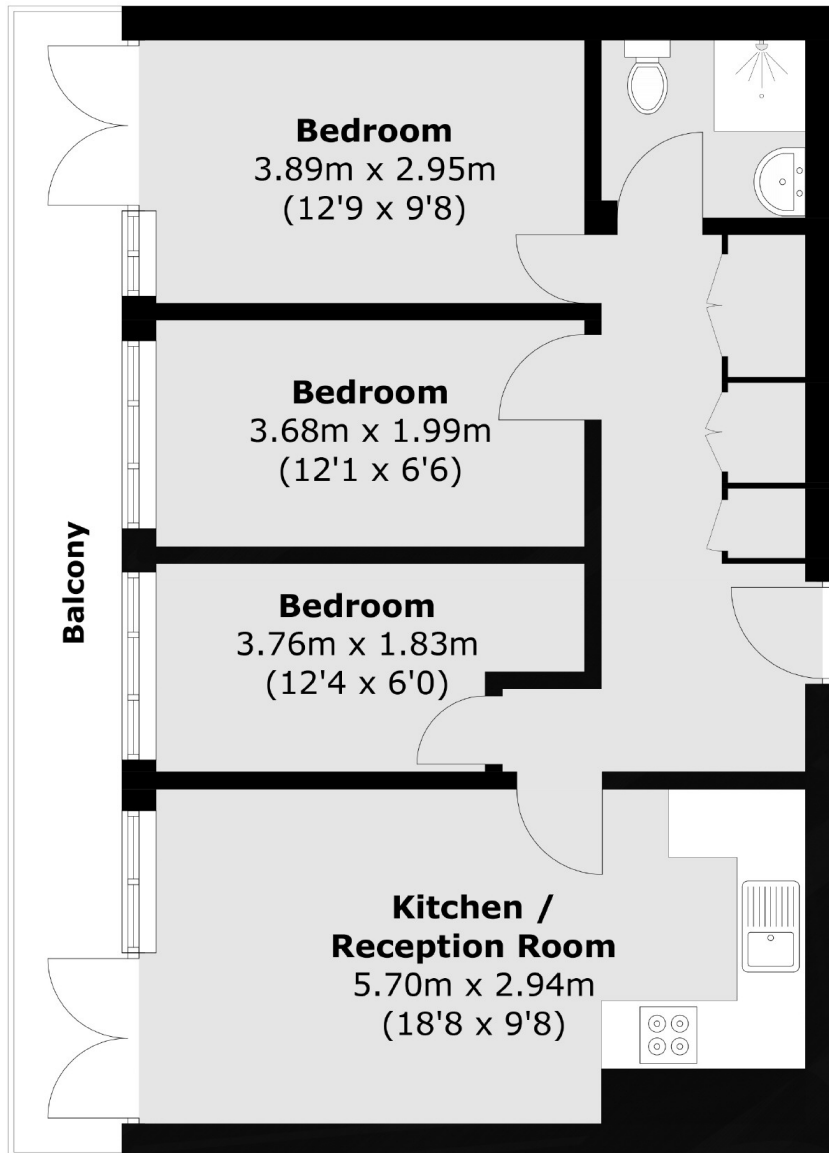
Clare Court, WC1H

£600,000

Introducing this rare to the market three bedroom apartment with a balcony. Located on the 1st floor, this property comprises of three bedrooms, one bathroom and an open plan reception room. Clare Court is a substantial purpose built Art Deco 1930s block on the junction of Tavistock Place with Judd Street in the heart of Bloomsbury. Key benefits include concierge, no onward chain as well as a private balcony.

Clare Court is extremely close to the Brunswick Shopping centre with an excellent Waitrose supermarket, 6 screen Curzon Cinema and many branded shops and restaurants. It always has excellent transport links as it is 0.3 miles to both King's Cross Station and Russell Square Station.

Frank Harris & Co.



First Floor

Total area (approx.): 54.8 sq. m (589.9 sq. ft)
Balcony: 9.5 sq. m (102.2 sq. ft)

Frank Harris & Co. Bloomsbury and Kings Cross
81 Marchmont Street,
London, WC1N 1AL
020 7405 4444
bloomsburysales@frankharris.co.uk

Energy Rating: C. We aim to make our particulars both accurate and reliable. However they are not guaranteed; nor do they form part of an offer or contract. If you require clarification on any points then please contact us, especially if you're traveling some distance to view. Please note that appliances and heating systems have not been tested and therefore no warranties can be given as to their good working order.

