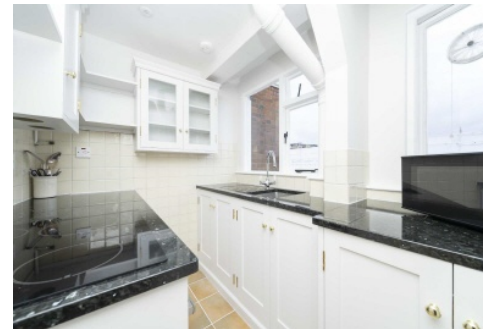


# Frank Harris & Co.



## Thanet House, WC1H

£550,000

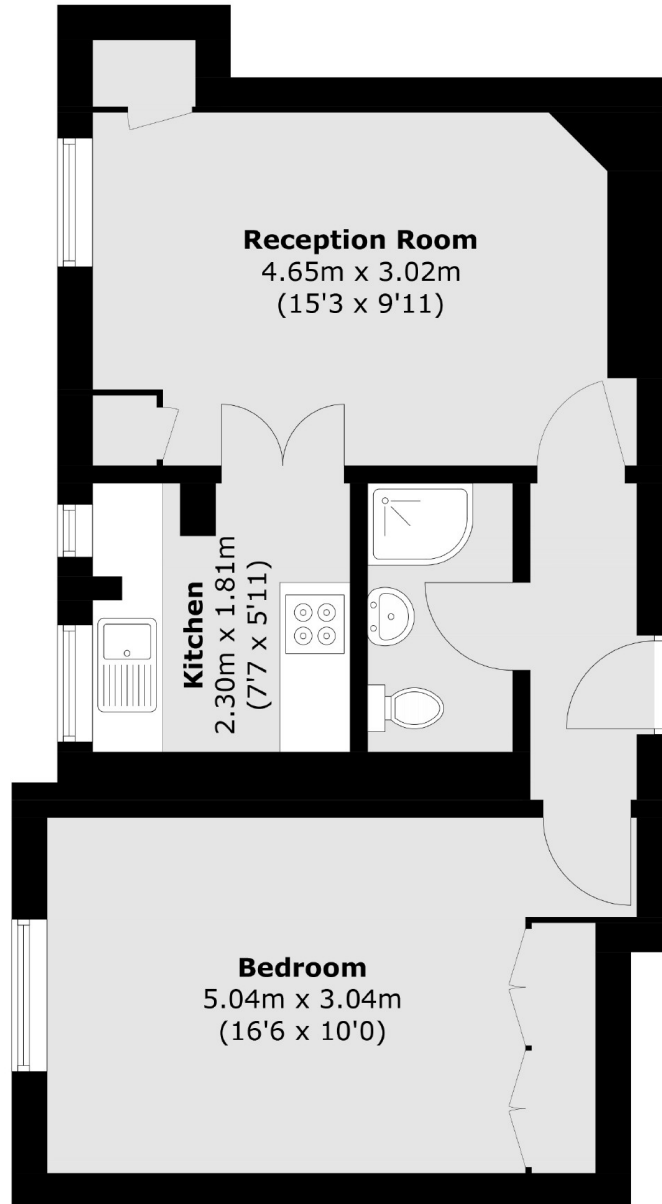
A bright one bedroom flat located on the top floor of this popular mansion block in Bloomsbury. The property comprises: Double bedroom, modern separate kitchen with a quiet & bright position within the block.

Thanet Street is centrally located between Judd Street and Marchmont Street. The local shopping amenities and restaurants of Bloomsbury and the West End are all close by. Euston, Kings Cross, St Pancras International and Russell Square stations service the area.

- One-Bedroom • Separate Kitchen • Mansion Block •
- Central Location • Top Floor • Lift Access •

# Frank Harris

## & Co.



Total area (approx.): 42.7 sq. m (459.6 sq. ft)

Frank Harris & Co. Bloomsbury and Kings Cross  
81 Marchmont Street,  
London, WC1N 1AL  
020 7405 4444  
[bloomsburysales@frankharris.co.uk](mailto:bloomsburysales@frankharris.co.uk)

Energy Rating: C. We aim to make our particulars both accurate and reliable. However they are not guaranteed; nor do they form part of an offer or contract. If you require clarification on any points then please contact us, especially if you're traveling some distance to view. Please note that appliances and heating systems have not been tested and therefore no warranties can be given as to their good working order.

