

Frank Harris & Co.



Bloomsbury, WC1R

£1,250,000

A Luxury two bedroom, two-bathroom Georgian conversion finished to a high standard and arranged over two floors.



The property occupies nearly 1200 Sq Ft of this impressive Georgian home and is situated in a prime position close by to Chancery Lane underground station.

The internal accommodation includes a living room with three large sash windows providing access to a modern kitchen/diner with floor to ceiling windows extracting light from the light well. The light well also serves the master bedroom which in turn provides access to the en-suite bathroom.

The lower ground floor has a separate WC, a bedroom with an additional en-suite shower and doors leading to an outside terrace.

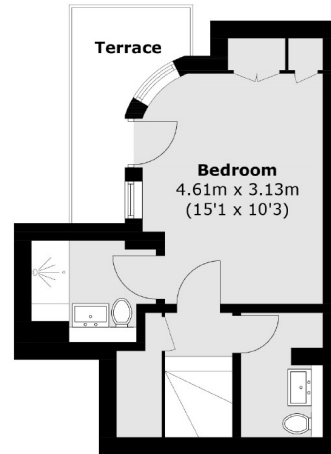
Warwick Court is positioned just east of bustling Covent Garden located between the tranquil green spaces of Lincolns Inn fields and cafés Inn Gardens. The area is surrounded by a variety of popular restaurants, bars, cafés and famous theatres.

- Two Double Bedrooms • En-Suite To Master • Outside Terrace •
 - Share Of Freehold • Air conditioning • No Onward Chain •
-



Frank Harris

& Co.



Lower Ground Floor



Ground Floor

Total area (approx.): 102.3 sq. m (1,101.1 sq. ft)
Terrace area (approx.): 4.7 sq. m (50.6 sq. ft)

Frank Harris & Co. Bloomsbury and Kings Cross
81 Marchmont Street,
London, WC1N 1AL
020 7405 4444
bloomsburysales@frankharris.co.uk

Energy Rating: B. We aim to make our particulars both accurate and reliable. However they are not guaranteed; nor do they form part of an offer or contract. If you require clarification on any points then please contact us, especially if you're traveling some distance to view. Please note that appliances and heating systems have not been tested and therefore no warranties can be given as to their good working order.

