

Frank Harris & Co.



Robert Street, NW1

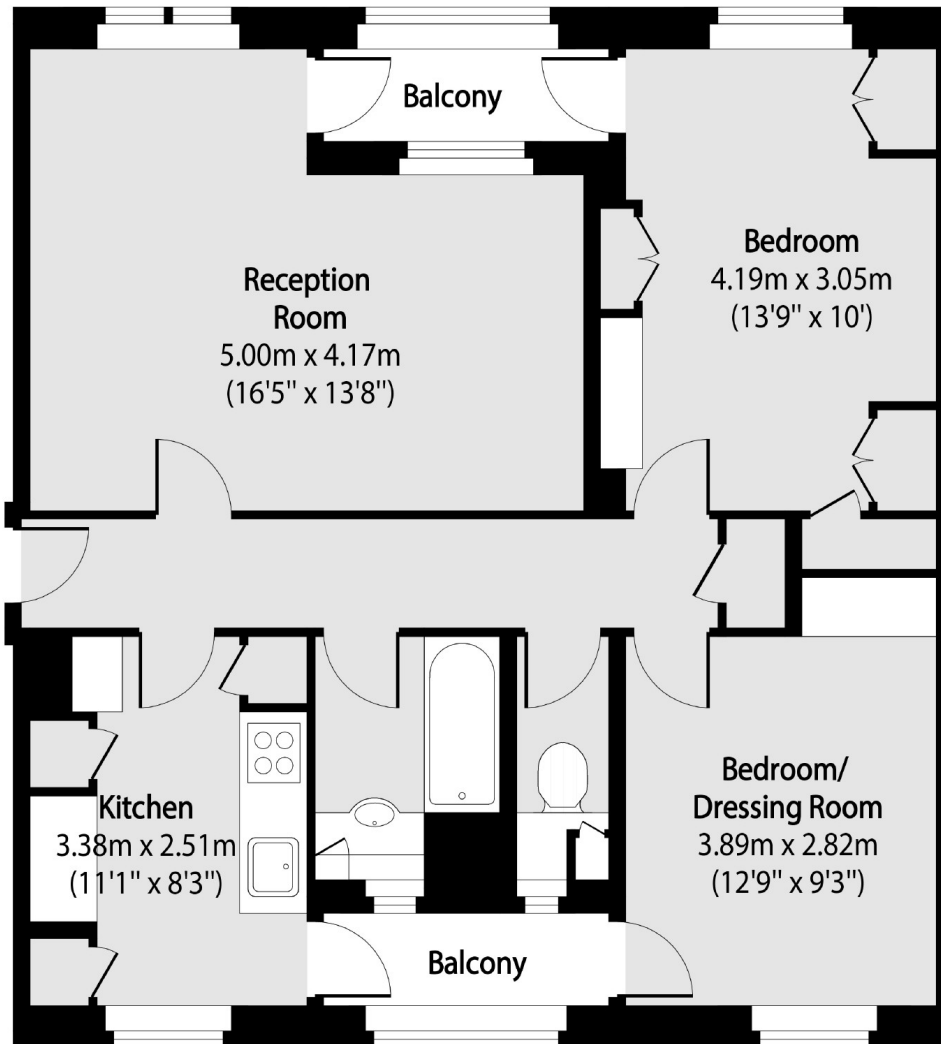
£500,000

A spacious two bedroom apartment located on the fifth floor with lift access. There is a generously sized and well-lit reception room, a separate kitchen and two private balconies.

Situated in a prime location providing easy access to Central London, the lively Camden area, and the beautiful Regents Park. This purpose-built development is well positioned, allowing for quick commutes with excellent rail connections at Euston and King's Cross stations, as well as Warren Street tube station

- Two Double Bedrooms • Two Balconies • Separate Kitchen •
- 700 Sq Ft • Lift Access • Excellent Transport Links •

Frank Harris & Co.



Total area (approx): 64.94 sq m (699 sq. ft)

Balcony total area (approx): 4.27 sq m (46 sq. ft)

Frank Harris & Co. Bloomsbury and Kings Cross
81 Marchmont Street,
London, WC1N 1AL
020 7405 4444
bloomsburysales@frankharris.co.uk

Energy Rating: D. We aim to make our particulars both accurate and reliable. However they are not guaranteed; nor do they form part of an offer or contract. If you require clarification on any points then please contact us, especially if you're traveling some distance to view. Please note that appliances and heating systems have not been tested and therefore no warranties can be given as to their good working order.

