

Frank Harris & Co.



Russell Court, WC1H

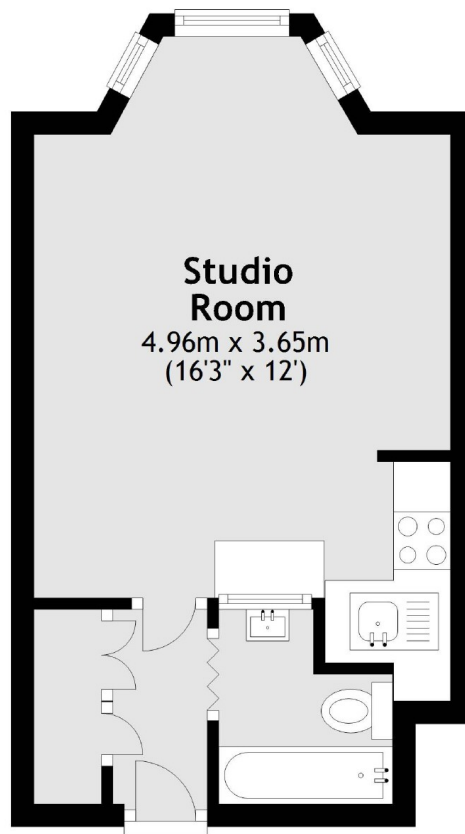
£250,000

Located at the rear of the building and in excellent condition throughout, the property has an open plan kitchen/living room, built-in storage and bay window.

Located just moments from Russell Square tube station, as well as numerous restaurants and the Brunswick Shopping Centre, this property would make an ideal home or London base.

- Studio Apartment • Share of Freehold • Lift Access •
- 24 Hour Concierge • Heating/Hot Water Inc • No Onward Chain •

Frank Harris & Co.



Total area: approx. 22.4 sq. metres (241.1 sq. feet)

Frank Harris & Co. Bloomsbury and Kings Cross
81 Marchmont Street,
London, WC1N 1AL
020 7405 4444
bloomsburysales@frankharris.co.uk

Energy Rating: . We aim to make our particulars both accurate and reliable. However they are not guaranteed; nor do they form part of an offer or contract. If you require clarification on any points then please contact us, especially if you're traveling some distance to view. Please note that appliances and heating systems have not been tested and therefore no warranties can be given as to their good working order.

