

# Frank Harris & Co.



## Coal Drops Yard, N1C

£7,500 Per week

A stunning three bedroom two bathroom apartment in one of Coal Drops Yards most popular developments. The property has underfloor heating and comfort cooling throughout with a spacious kitchen/diner that has direct access to the west facing balcony. There is also an abundance of storage with integrated wardrobes in the hallway and principle bedroom.





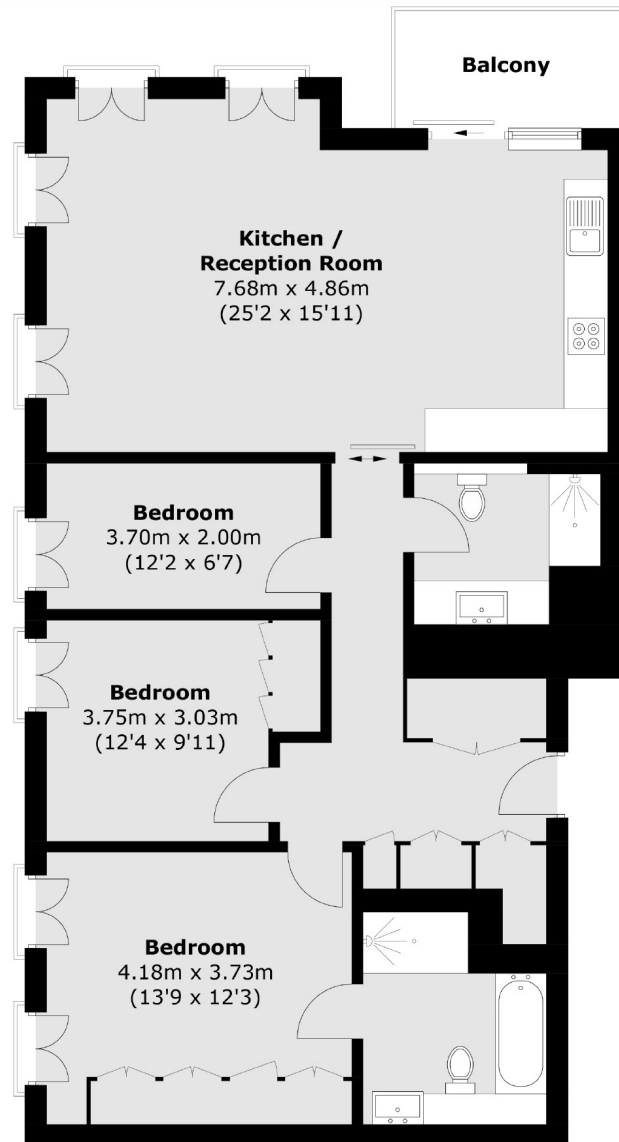
Lewis Cubitt Park is just a short walk from Kings Cross/St Pancras station providing convenient access for Eurostar to Paris and Europe. It is next to Coal Drops Yard retail quarter with a vast amount of new shops, restaurants and facilities.

- Daytime Concierge • Communal Roof Garden • Balcony •
- New Build • Underfloor Heating • Comfort Cooling •





# Frank Harris & Co.



Total area (approx.): 100.9 sq. m (1,086.1 sq. ft)  
Balcony: 5.1 sq. m (54.9 sq. ft)

Frank Harris & Co. Bloomsbury and Kings Cross

81 Marchmont Street,

London, WC1N 1AL

020 7387 0077

[bloomsburylettings@frankharris.co.uk](mailto:bloomsburylettings@frankharris.co.uk)

Energy Rating: B. We aim to make our particulars both accurate and reliable. However they are not guaranteed; nor do they form part of an offer or contract. If you require clarification on any points then please contact us, especially if you're traveling some distance to view. Please note that appliances and heating systems have not been tested and therefore no warranties can be given as to their good working order.

