

Frank Harris & Co.



Bloomsbury, WC1H

£290,000

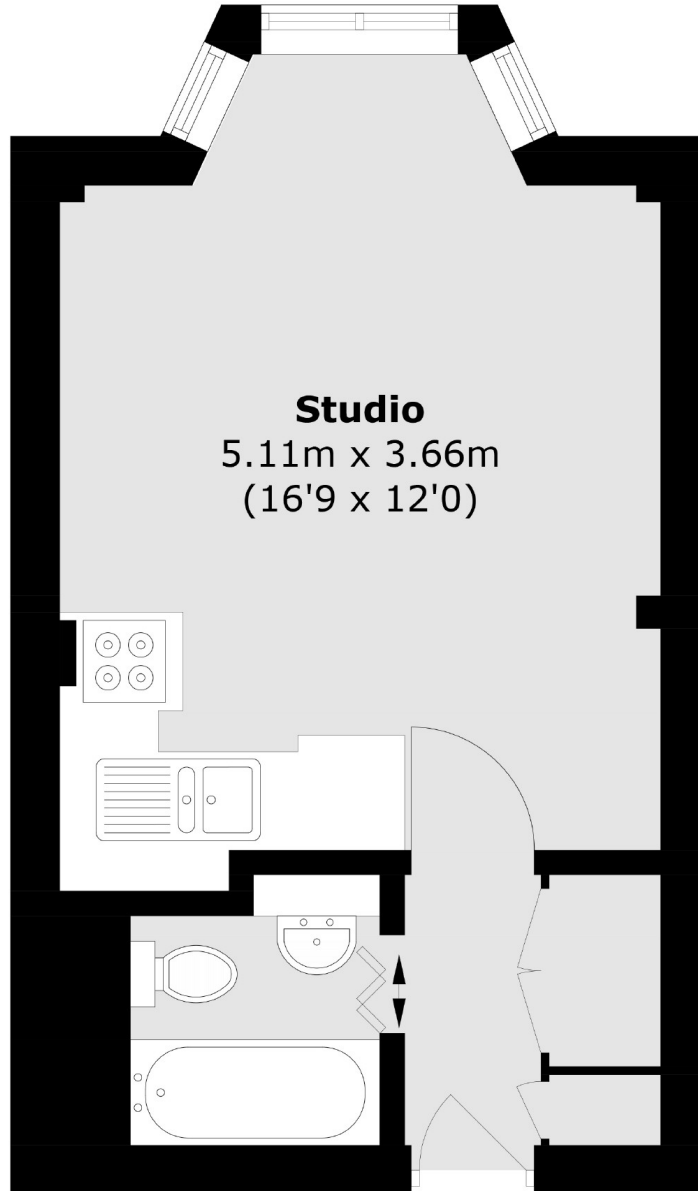
A bright and well-presented studio apartment on the fifth floor of this popular 24 hour portered block on Russell Square. There is a good sized studio room with eat-in kitchen and modern bathroom suite. Heating and hot water included are included in the service charge. Key benefits include no onward chain and share of the freehold.

Russell Court is a highly popular and sought after portered block and is conveniently located just a few yards from Russell Square underground station. It is also a walk away from the Brunswick Centre and Covent Garden both displays an array of cafés, shops and restaurants for your entertainment.

- Studio • Share of the Freehold • Central London •

Frank Harris

& Co.



Total area (approx.): 22.2 sq. m (239.0 sq. ft)

Frank Harris & Co. Bloomsbury and Kings Cross
81 Marchmont Street,
London, WC1N 1AL
020 7405 4444
bloomsburysales@frankharris.co.uk

Energy Rating: C. We aim to make our particulars both accurate and reliable. However they are not guaranteed; nor do they form part of an offer or contract. If you require clarification on any points then please contact us, especially if you're traveling some distance to view. Please note that appliances and heating systems have not been tested and therefore no warranties can be given as to their good working order.

