

# Frank Harris & Co.



## Cromer Street, WC1H

£553 Per week

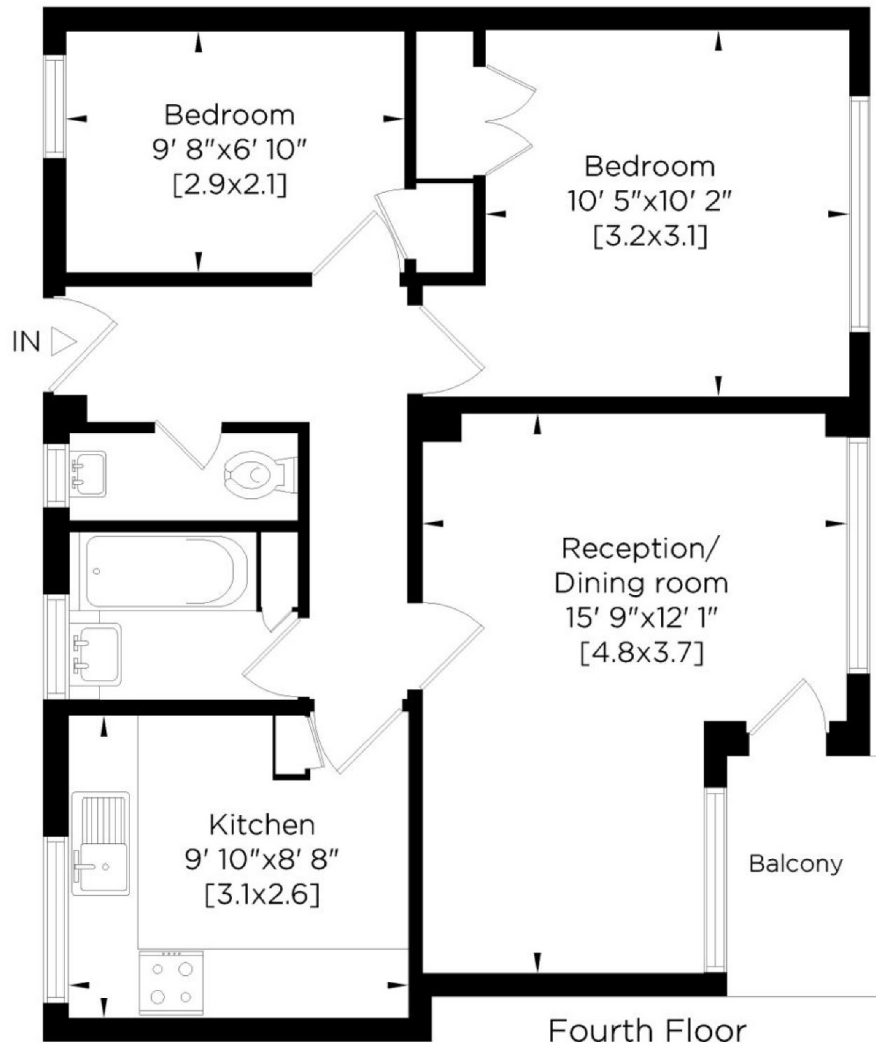
A spacious two bedroom flat located on the 4th floor of a purpose-built block with lift access. Conveniently located for UCL, LSE, SOAS, Kings Cross Underground Station and Russell Square. The property comprises: Living room with balcony, separate kitchen, and two double bedrooms.

Cromer Street is located close to the British Library and Kings Cross and Russell Square underground stations.

- Two-Bedrooms • Balcony • 4th Floor (lift) •
- Separate Kitchen • Furnished • Available 31/10 •

# Frank Harris & Co.

Bedefield House WC1  
Gross Internal Area:  
54 Sq. metres  
583 Sq. feet



Whilst every attempt has been made to ensure the accuracy of this floor plan, measurements of doors, windows and rooms are approximate. For identification purposes only. Not to scale.©

Frank Harris & Co. Bloomsbury and Kings Cross  
81 Marchmont Street, London,  
WC1N 1AL  
020 7387 0077  
bloomsburylettings@frankharris.co.uk

Energy Rating: D. We aim to make our particulars both accurate and reliable. However they are not guaranteed; nor do they form part of an offer or contract. If you require clarification on any points then please contact us, especially if you're traveling some distance to view. Please note that appliances and heating systems have not been tested and therefore no warranties can be given as to their good working order.

