

# Frank Harris & Co.



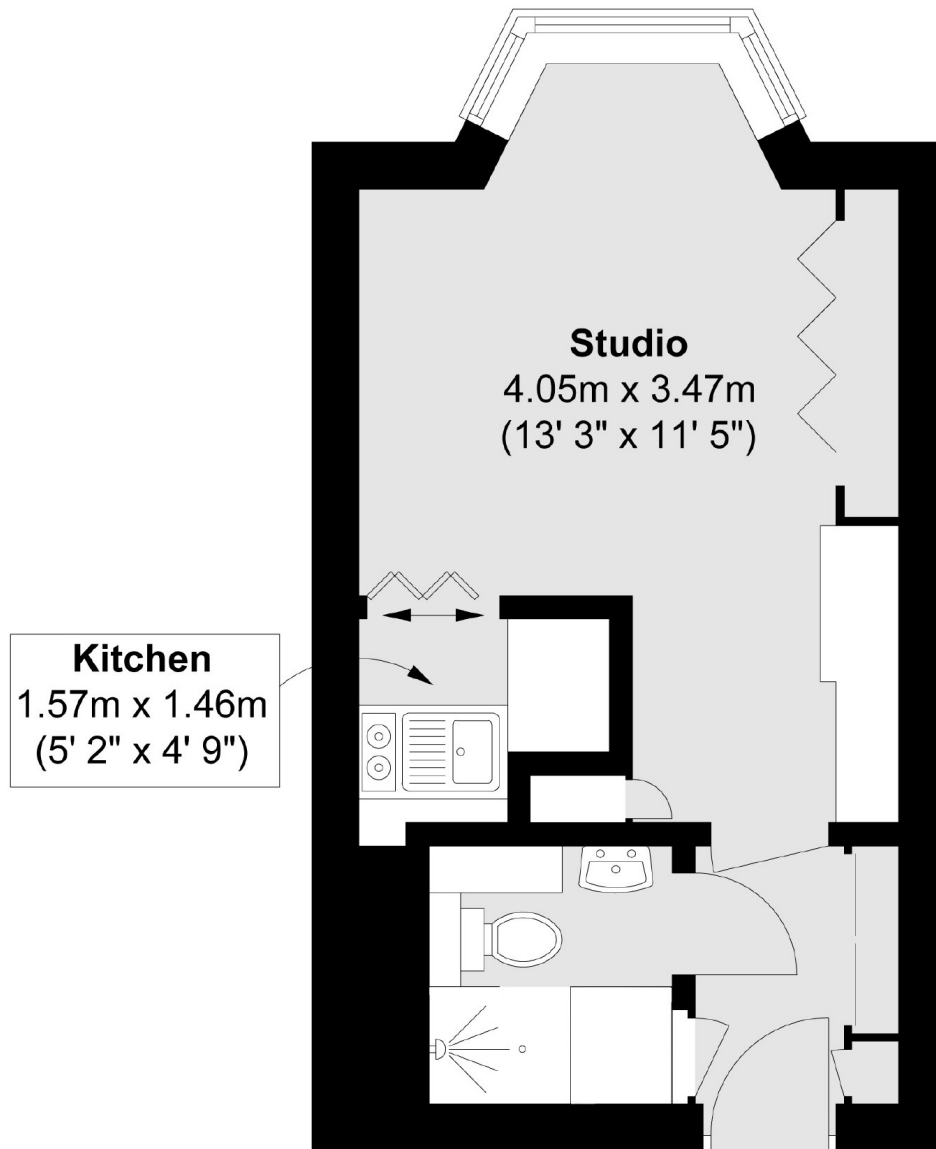
## Bloomsbury, WC1H

£285,000

Offered to the market is this studio set on the 4th floor. This well-styled studio set in Russell Court is ideal for Pied-à-terre living. This property comprises of a built in desk, fold down bed, a kitchen that is semi open plan, more built in storage than most studios, as well as an updated bathroom. Key features include: heating and hot water as a service within the management charge, bay windows (which let in an abundance of light), no onward chain and a concierge.

Russell Court, located on Woburn Place is close in walking distance to leafy Russell Square, its café and underground station. The Brunswick shopping centre is nearby, with Central London's largest Waitrose supermarket, other shopping amenities, restaurants and a cinema.

# Frank Harris & Co.



Total area (approx.) : 21.5 sq. m (231 sq. ft)

Frank Harris & Co. Bloomsbury and Kings Cross  
81 Marchmont Street,  
London, WC1N 1AL  
020 7405 4444  
bloomsburysales@frankharris.co.uk

Energy Rating: C. We aim to make our particulars both accurate and reliable. However they are not guaranteed; nor do they form part of an offer or contract. If you require clarification on any points then please contact us, especially if you're traveling some distance to view. Please note that appliances and heating systems have not been tested and therefore no warranties can be given as to their good working order.

