

# Frank Harris & Co.



## Fitzrovia, W1T

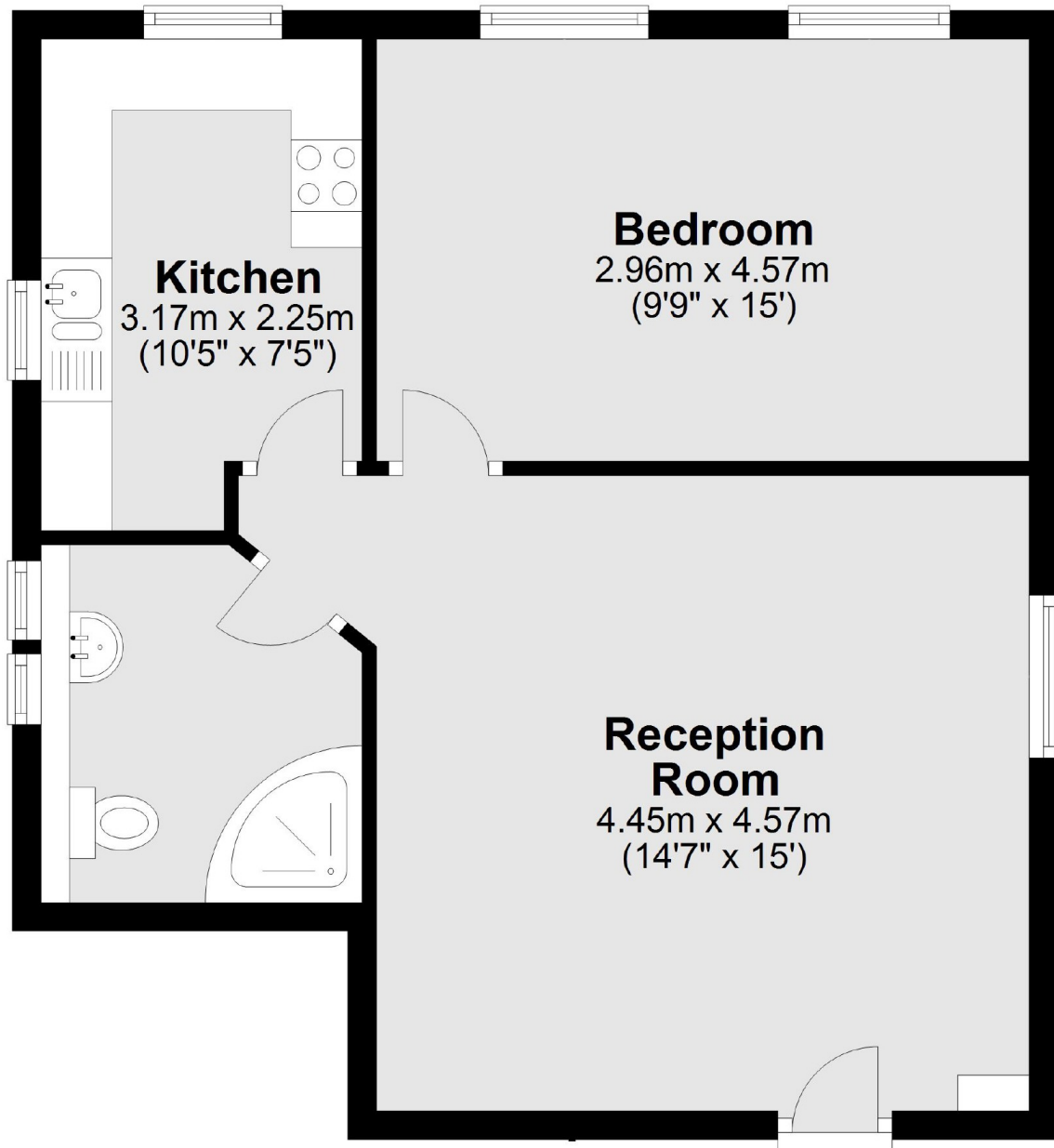
£625,000

Introducing this large one double bedroom flat in the heart of Fitzrovia. Over 500 sq.ft this one bedroom apartment comprises of a separate kitchen and is presented in good condition. Key benefits include real oak engineered floor throughout, under floor heating, ideal location, an over 100 year lease and no onward chain.

Tottenham Street is ideally situated with Goodge Street station under a minute walk away, and Warren Street and Tottenham Court Road Underground Stations being within walking distance too. Local cafes, restaurants, shops and amenities are within close proximity especially as Soho and Covent Garden are moments away.

- Fitzrovia • Over 100 Year Lease • No Onward Chain •

# Frank Harris & Co.



Total area: approx. 48.6 sq. metres (523.1 sq. feet)

Frank Harris & Co. Bloomsbury and Kings Cross  
81 Marchmont Street,  
London, WC1N 1AL  
020 7405 4444  
bloomsburysales@frankharris.co.uk

Energy Rating: C. We aim to make our particulars both accurate and reliable. However they are not guaranteed; nor do they form part of an offer or contract. If you require clarification on any points then please contact us, especially if you're traveling some distance to view. Please note that appliances and heating systems have not been tested and therefore no warranties can be given as to their good working order.

