

# Frank Harris & Co.



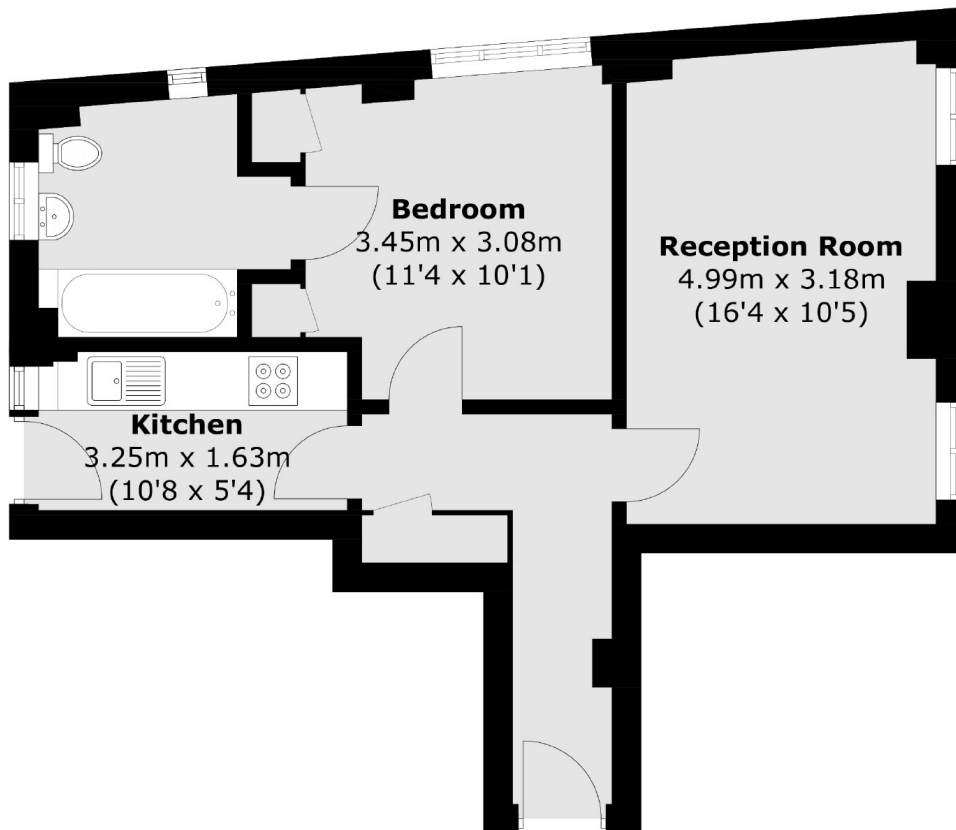
## Witley Court, Bloomsbury, WC1N

£550,000

Introducing this charming one double bedroom property. Situated within a well-maintained mansion block, the flat comprises of a separate kitchen and an en-suite. Benefits include a ported service, extended lease as well as no onward chain.

Coram Street is located in the Bloomsbury area of London. It's a relatively quiet street characterised by its proximity to several notable landmarks and institutions. The surrounding area is known for its rich history and academic presence, being near institutions such as the University of London and the British Museum. The nearest underground station is Russell Square followed by King's Cross St. Pancras.

# Frank Harris & Co.



Total area (approx.): 46.0 sq. m (495.1 sq. ft)

Frank Harris & Co. Bloomsbury and Kings Cross  
81 Marchmont Street,  
London, WC1N 1AL  
020 7405 4444  
bloomsburysales@frankharris.co.uk

Energy Rating: D. We aim to make our particulars both accurate and reliable. However they are not guaranteed; nor do they form part of an offer or contract. If you require clarification on any points then please contact us, especially if you're traveling some distance to view. Please note that appliances and heating systems have not been tested and therefore no warranties can be given as to their good working order.

