

Frank Harris & Co.



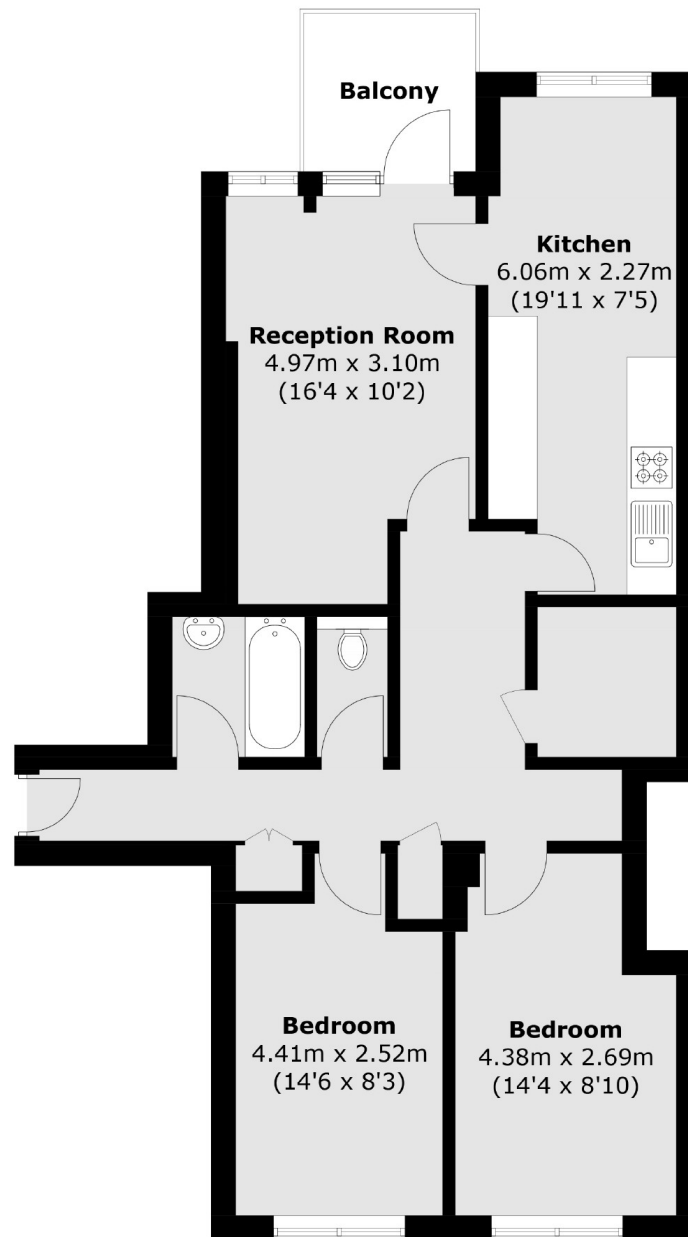
St. Peters Court, WC1H

£600,000

This charming two-bedroom property, situated on the top floor, offers a delightful living experience with ample natural light and modern comforts. The apartment is in good condition, featuring contemporary finishes and a warm, inviting atmosphere. One of the standout features of this property is the private balcony, which offers picturesque views over Regent Square Gardens.

Seaford Street benefits from excellent transport connections. Russell Square (Piccadilly Line), and King's Cross St. Pancras station are nearby. The development is close to The Brunswick Centre which a well-known shopping and residential complex that combines retail, dining, and housing. It features a range of shops, cafes, restaurants, and residential apartments in a distinctive modernist architectural style.

Frank Harris & Co.



Fourth Floor

Total area (approx.): 71.7 sq. m (771.8 sq. ft)
Balcony: 4.0 sq. m (43.0 sq. ft)

Frank Harris & Co. Bloomsbury and Kings Cross
81 Marchmont Street,
London, WC1N 1AL
020 7405 4444
bloomsburysales@frankharris.co.uk

Energy Rating: D. We aim to make our particulars both accurate and reliable. However they are not guaranteed; nor do they form part of an offer or contract. If you require clarification on any points then please contact us, especially if you're traveling some distance to view. Please note that appliances and heating systems have not been tested and therefore no warranties can be given as to their good working order.

