

# Frank Harris — & Co. —



## Cromer Street, WC1H

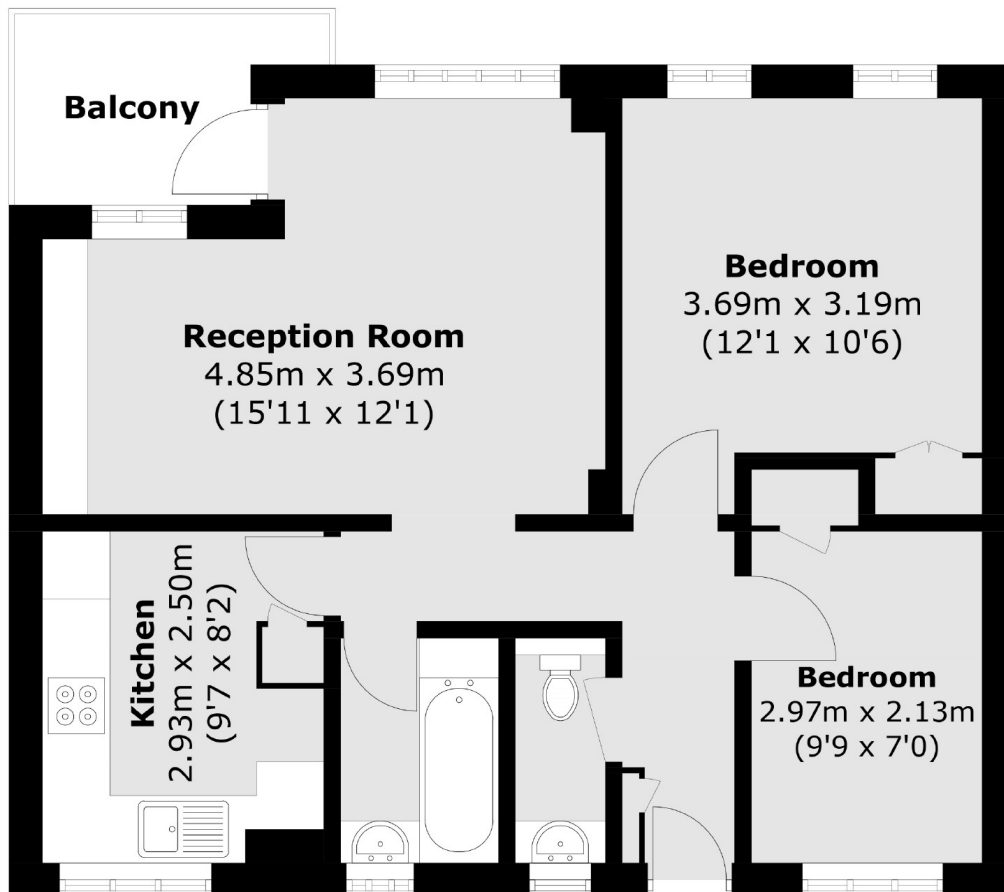
£500,000

Offered to the market is this two bedroom apartment within a purpose built building set on the 3rd floor (with lift) and a long lease with 115 years remaining.

Sandfield is well located moments away from King's Cross, St Pancras International and Russell Square stations. Bloomsbury is highly sought after location offering close proximity to the Brunswick Centre.

- Lift Access • Centrally Located • Private Balcony •
- Modernly Refurbished • Two Bedroom • 115 Year Lease •

# Frank Harris & Co.



Total area (approx.): 54.3 sq. m (584.5 sq. ft)  
Balcony area (approx.): 3.9 sq. m (42.0 sq. ft)

Frank Harris & Co. Bloomsbury and Kings Cross  
81 Marchmont Street,  
London, WC1N 1AL  
020 7405 4444  
[bloomsburysales@frankharris.co.uk](mailto:bloomsburysales@frankharris.co.uk)

Energy Rating: C. We aim to make our particulars both accurate and reliable. However they are not guaranteed; nor do they form part of an offer or contract. If you require clarification on any points then please contact us, especially if you're traveling some distance to view. Please note that appliances and heating systems have not been tested and therefore no warranties can be given as to their good working order.

