

Frank Harris & Co.



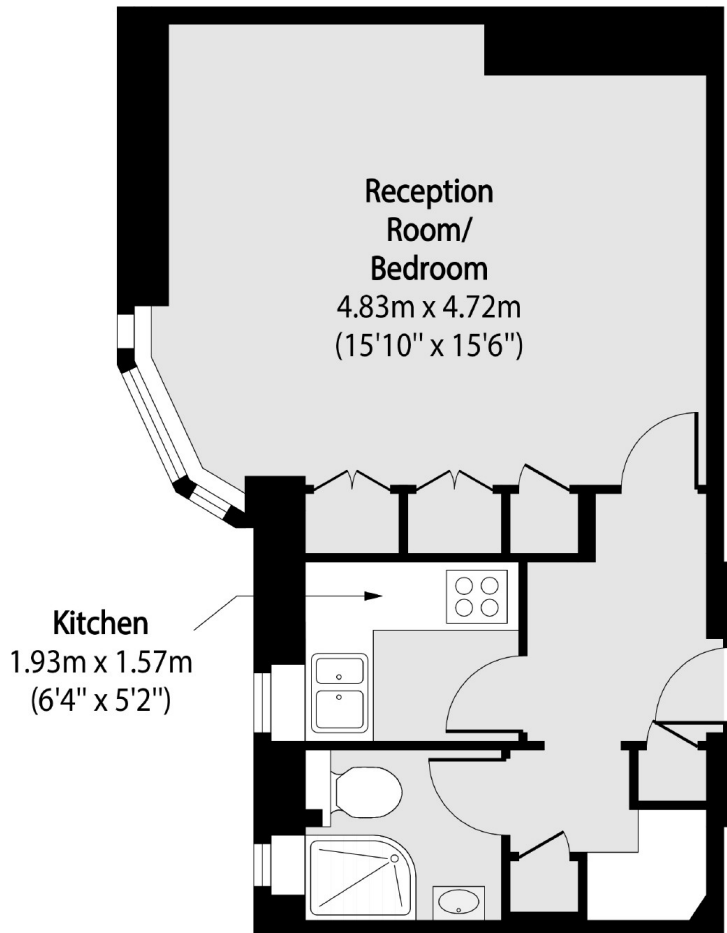
Clare Court, WC1H

£470,000

A bright fifth floor studio apartment set within this sought after 1930s block in the heart of Bloomsbury. The property benefits from an extended lease and boasts a practical and well-designed internal layout and modern kitchen. Clare Court has a daytime concierge service, door entry system and 2 passenger lifts.

Local shopping amenities (including inner London's largest Waitrose) can be found at The Brunswick with its range of shops, restaurants and cinemas together with the smaller independent shops on Marchmont Street. St. Pancras International, Kings Cross and Russell Square Underground station are all a short walk away affording excellent national and international transport facilities with UCL, SOAS, UCLH and Great Ormond Street hospital also within close proximity.

Frank Harris & Co.



Total area (approx): 32.89 sq m (354 sq. ft)

Frank Harris & Co. Bloomsbury and Kings Cross
81 Marchmont Street,
London, WC1N 1AL
020 7405 4444
bloomsburysales@frankharris.co.uk

Energy Rating: B. We aim to make our particulars both accurate and reliable. However they are not guaranteed; nor do they form part of an offer or contract. If you require clarification on any points then please contact us, especially if you're traveling some distance to view. Please note that appliances and heating systems have not been tested and therefore no warranties can be given as to their good working order.

