

Frank Harris & Co.



London, WC1N

£669 Per week

A beautifully refurbished two bedroom apartment set in a period conversion conveniently located for Russell Square Underground. The property has been finished to a high standard and includes wood flooring, high specification kitchen, two double bedrooms, secondary double glazing in every room



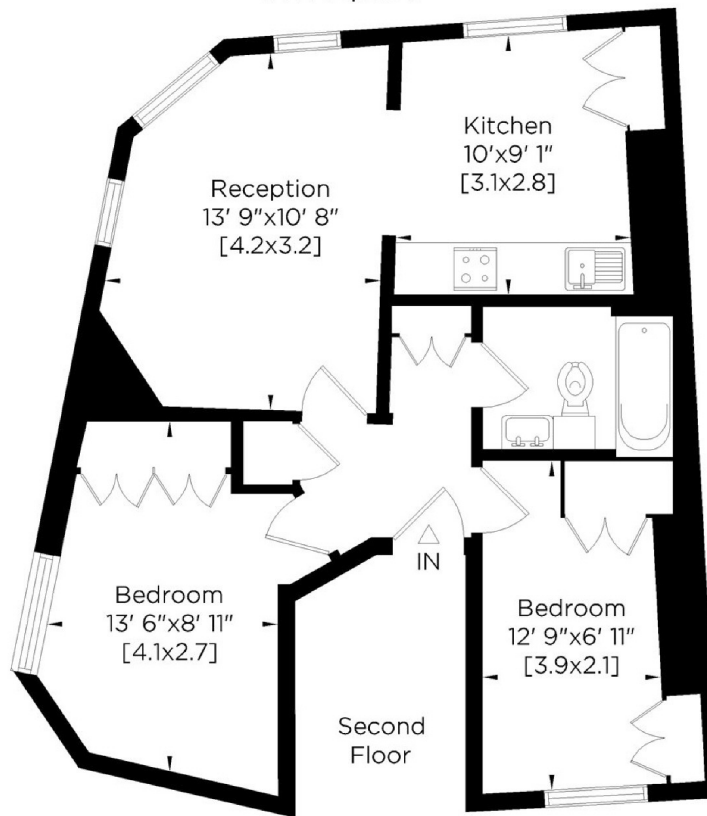
Located near the junction of Tavistock Place, Marchmont Street is just a few yards from the Brunswick Centre, Russell Square and St Pancras International stations.

- 2 bedrooms • 1 reception • Period conversion •
- Furnished • Long let • Available mid September •



Frank Harris & Co.

Marchmont Street WC1
Gross Internal Area:
53 Sq. metres
572 Sq.feet



Whilst every attempt has been made to ensure the accuracy of this floor plan, measurements of doors, windows, rooms and Sq.footage are approximate within 5% accuracy. For identification purposes only. You must recheck all details before purchase and only purchase when you have confirmed them. Not to scale. © www.steele.london - Email: patricia@steele.london - Tel: 07847 219401

Frank Harris & Co. Bloomsbury and Kings Cross
81 Marchmont Street, London,
WC1N 1AL
020 7387 0077
bloomsburylettings@frankharris.co.uk

Energy Rating: C. We aim to make our particulars both accurate and reliable. However they are not guaranteed; nor do they form part of an offer or contract. If you require clarification on any points then please contact us, especially if you're traveling some distance to view. Please note that appliances and heating systems have not been tested and therefore no warranties can be given as to their good working order.

