

Frank Harris & Co.



Old Gloucester Street, WC1N

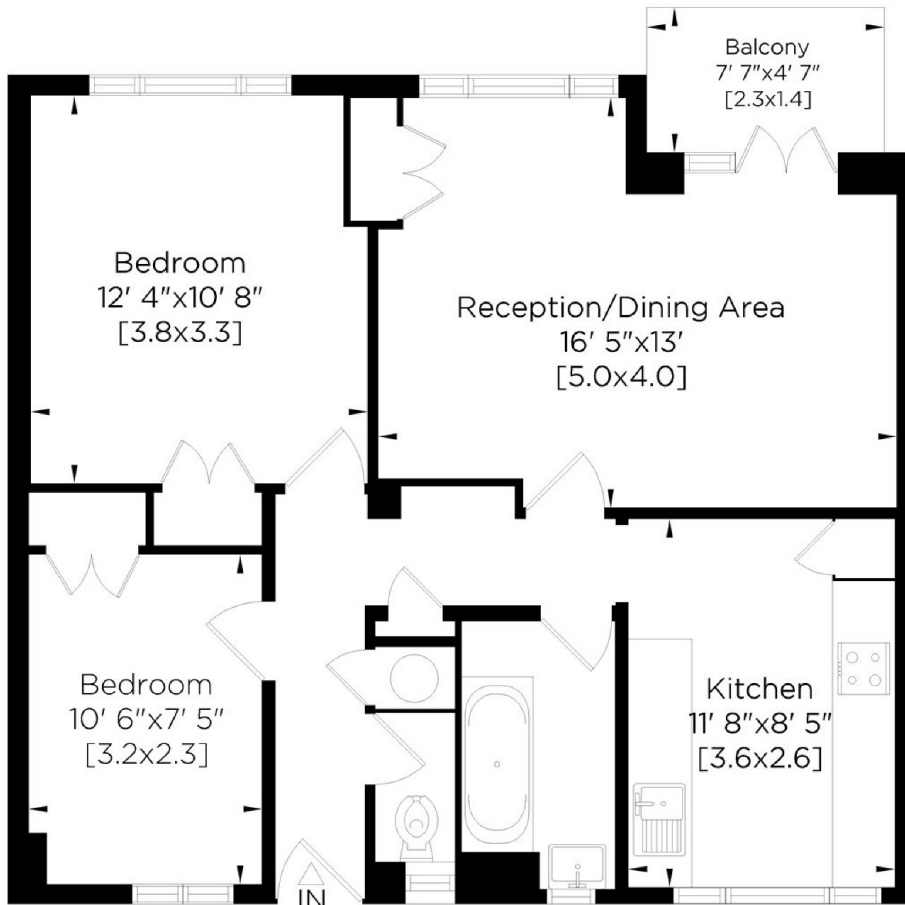
£750 Per week

A beautifully presented and high-quality two bedroom property located minutes' walk from Holborn Underground Station. The property is finished to the highest standard and comprises: Bright west facing reception with parquet flooring, separate kitchen & two double bedrooms.

The property is located 0.2 miles from Holborn Station and 0.3 miles from Russell Square Station. All the boutiques, restaurants, and coffee shops of Lambs Conduit Street are only 0.2 miles away.

- Balcony • Parquet flooring • Modern fixtures & fittings •
- Furnished • Two double bedrooms • 4th floor (lift) •

Frank Harris & Co.



Falcon WC1
Gross Internal Area:
62 Sq. metres
665 Sq. feet



Fourth Floor



Whilst every attempt has been made to ensure the accuracy of this floor plan, measurements of doors, windows, rooms, angles and Sq. footage are approximate within 5% accuracy. For identification purposes only. Not to be used as part of the decision to buy. You must recheck all details before purchase and only purchase when you have confirmed them. Price on application for a 90 day licence to use this plan. No appliances tested. Not to scale ©. Floorplan, EPC, Virtual Tour and Photography by www.steele.london - Email: patricia@steele.london - Tel: 07847 219401

Frank Harris & Co. Bloomsbury and Kings Cross
81 Marchmont Street, London,
WC1N 1AL
020 7387 0077
bloomsburylettings@frankharris.co.uk

Energy Rating: C. We aim to make our particulars both accurate and reliable. However they are not guaranteed; nor do they form part of an offer or contract. If you require clarification on any points then please contact us, especially if you're traveling some distance to view. Please note that appliances and heating systems have not been tested and therefore no warranties can be given as to their good working order.

