

Frank Harris & Co.



Paramount Court, WC1E

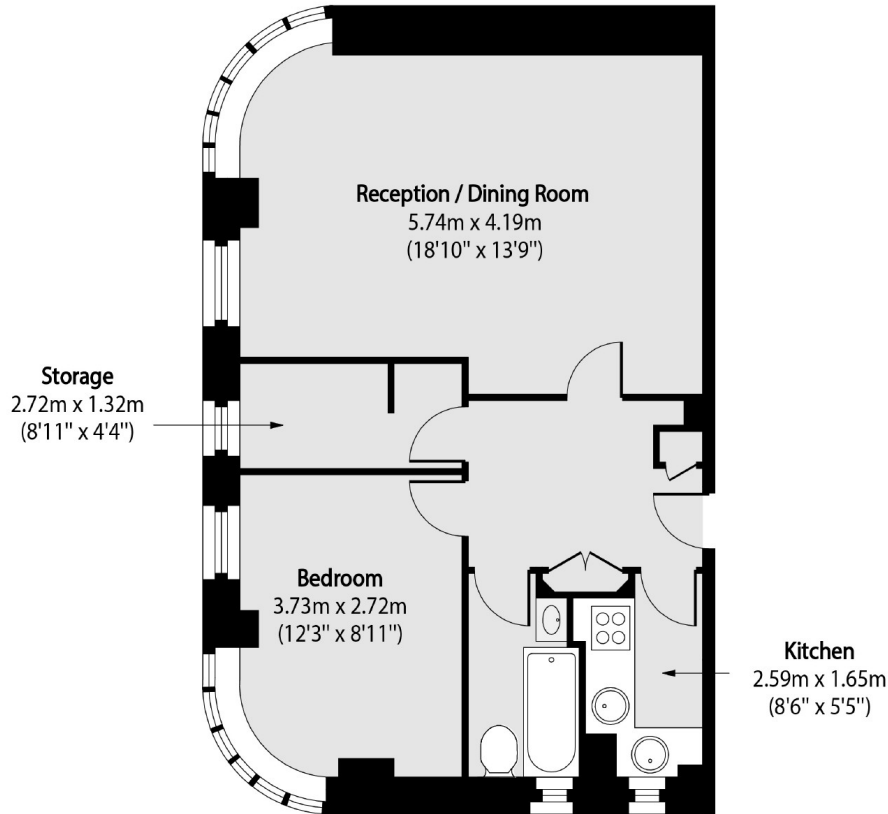
£600,000

Presenting this bright and spacious third floor one bedroom corner apartment. This portered 1930s Art Deco building flat has a separate kitchen and wooden flooring. The building has a 24 hour concierge and service charges include heating and hot water.

University Street is just a short walk away from Goodge Street and Warren Street stations. UCL and LSE are in within close proximity. A variety of entertainment can be found down Tottenham Court Road which Paramount Court faces.

- 1930s Art Deco Building • Concierge • Lift Access •
- Over 200 Year Lease • Central Location • Corner Flat •

Frank Harris & Co.



Total area (approx): 50.45 sq m (543 sq. ft)

Frank Harris & Co. Bloomsbury and Kings Cross
81 Marchmont Street,
London, WC1N 1AL
020 7405 4444
bloomsburysales@frankharris.co.uk

Energy Rating: C. We aim to make our particulars both accurate and reliable. However they are not guaranteed; nor do they form part of an offer or contract. If you require clarification on any points then please contact us, especially if you're traveling some distance to view. Please note that appliances and heating systems have not been tested and therefore no warranties can be given as to their good working order.

