

Frank Harris & Co.



Bloomsbury, WC1N

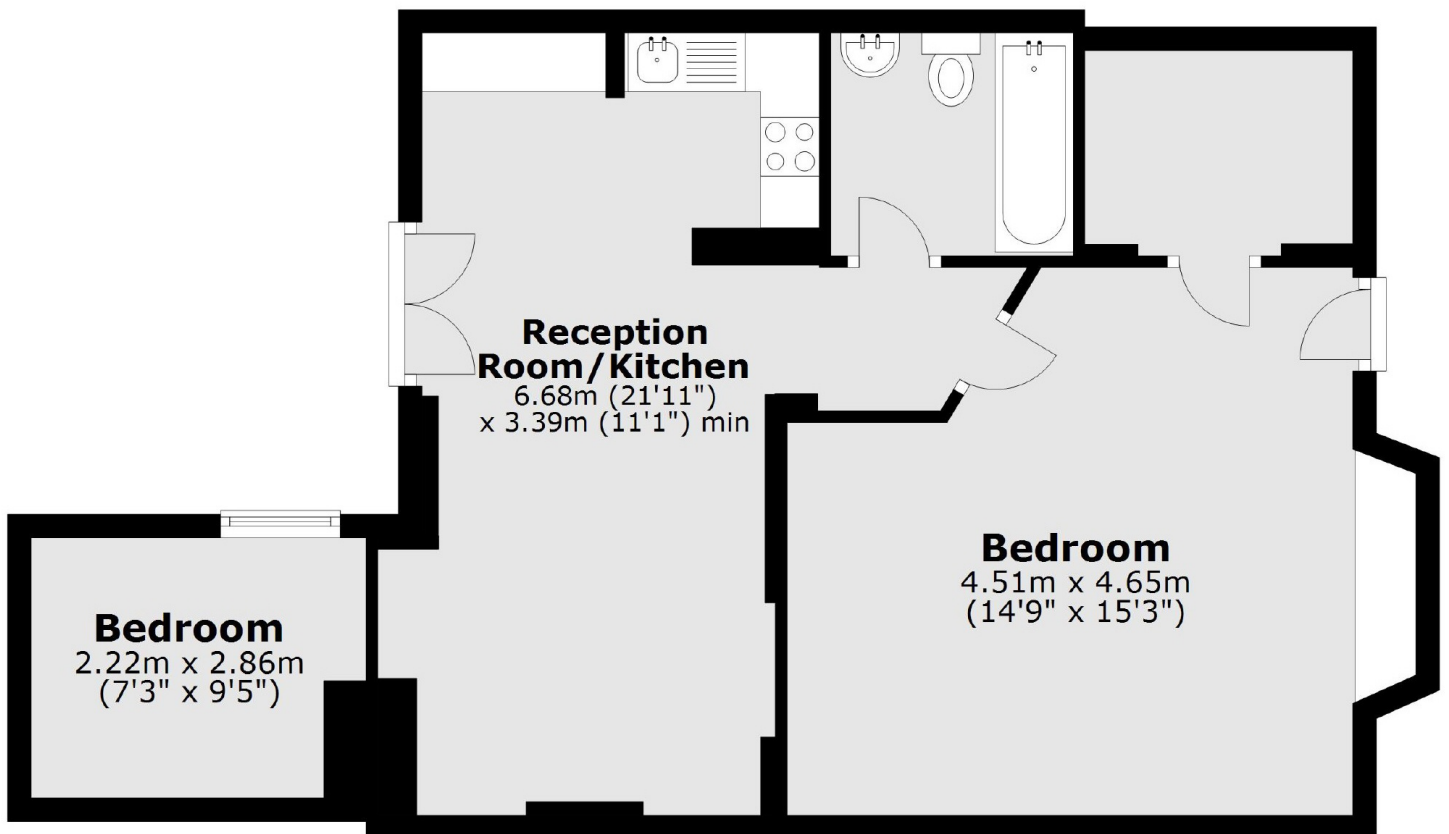
£484 Per week

Having just received brand-new carpet and a fresh coat of paint this large one bedroom is ready for immediate occupation. One bedroom with an extra study/snug/bedroom.

The property is equidistant from Russell Square and Holborn stations. The property is only 200ft from Queen Square Gardens.

- Recently decorated • 1.5 bedrooms • Walk-in wardrobe •
- Bike storage • Secure building • Available immediately •

Lower Ground Floor



Frank Harris & Co. Bloomsbury and Kings Cross

81 Marchmont Street,

London, WC1N 1AL

020 7387 0077

bloomsburylettings@frankharris.co.uk

Energy Rating: D. We aim to make our particulars both accurate and reliable. However they are not guaranteed; nor do they form part of an offer or contract. If you require clarification on any points then please contact us, especially if you're traveling some distance to view. Please note that appliances and heating systems have not been tested and therefore no warranties can be given as to their good working order.